

Mercury Rising

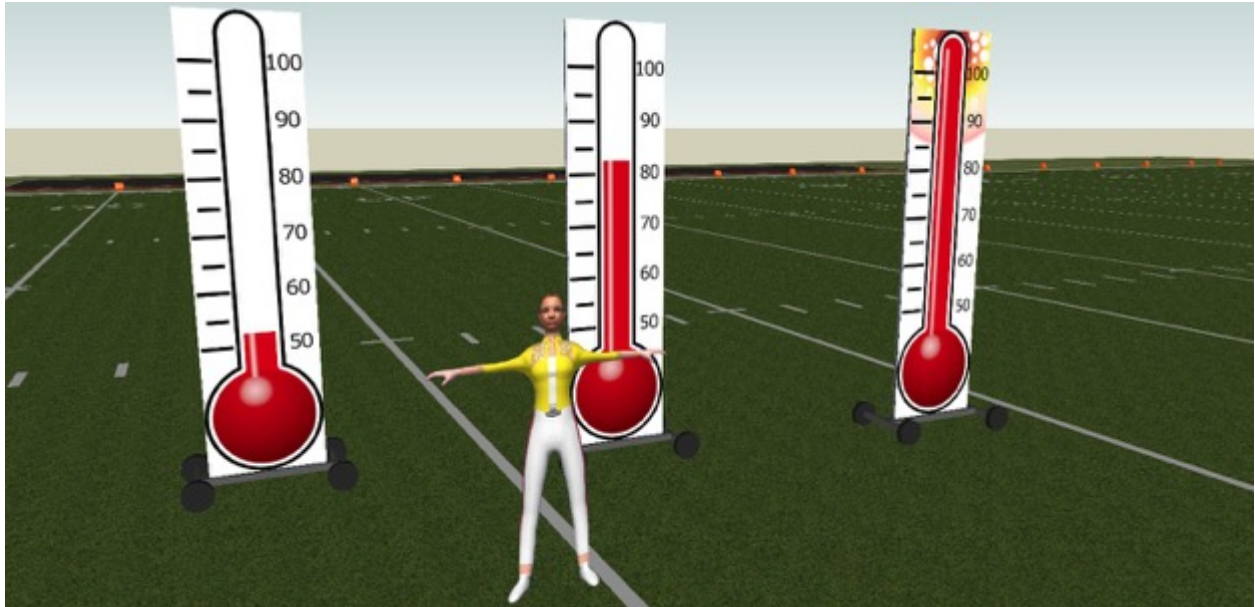
Fannin Musical Productions

Fun, clever, and witty, *Mercury Rising* by Fannin Musical Productions cleverly interweaves 'Mercury' from Holst's immortal *The Planets* with the music of rock icons Queen... and their superstar front man, Freddie Mercury. The resulting composition finds surprising resonances between its seemingly disparate sources and suggests a huge range of visual interpretive possibilities. The show design for *Mercury Rising* playfully uses every possible meaning of the name: god, element, planet—and of course, rock star—to create a show that will impress judges while also entertaining students and fans.

This show requires copyright permission to perform.

Props & Set Design

For Mercury Rising we have created several different prop and staging options to suit the needs of your unique ensemble. Mix and match to create a unique stage for your band's performance.



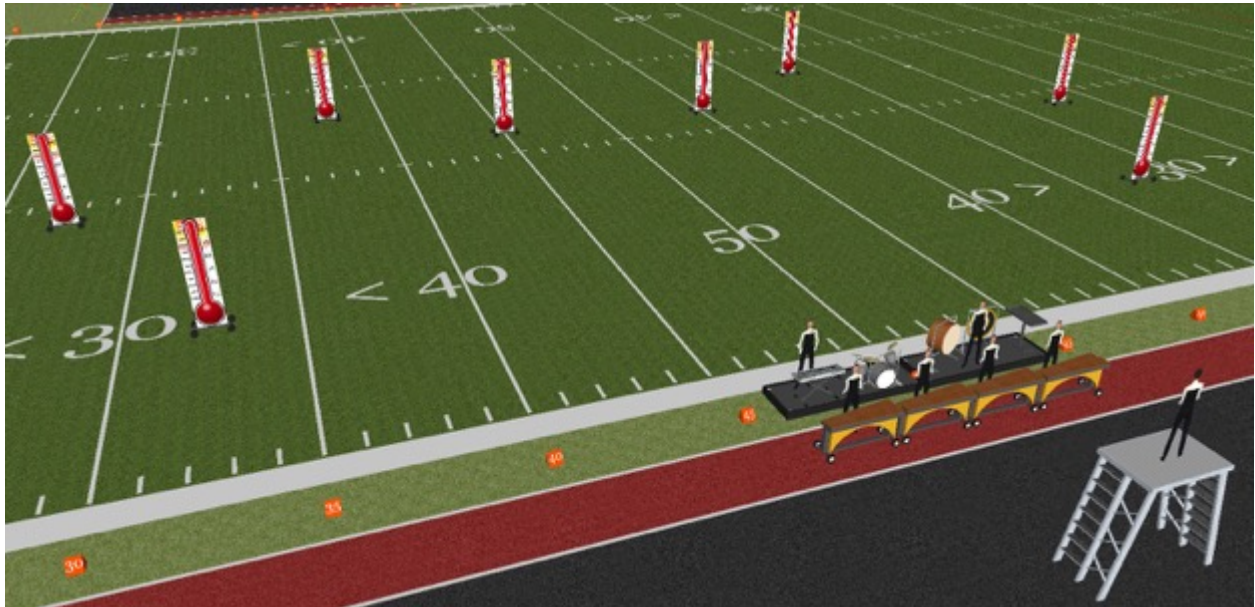
First, simple oversized thermometers using rip away Velcro sections to literalize the theme of 'mercury rising' as the show builds in intensity to the end. These are based on the [Corps Design 'Totem' props](#) which are also utilized by several other FMP shows, providing long-term utility for your group for years to come. High quality digital printing is available via FMP. Already have similar backdrops with different dimensions? Our artists can customize to suit your needs.

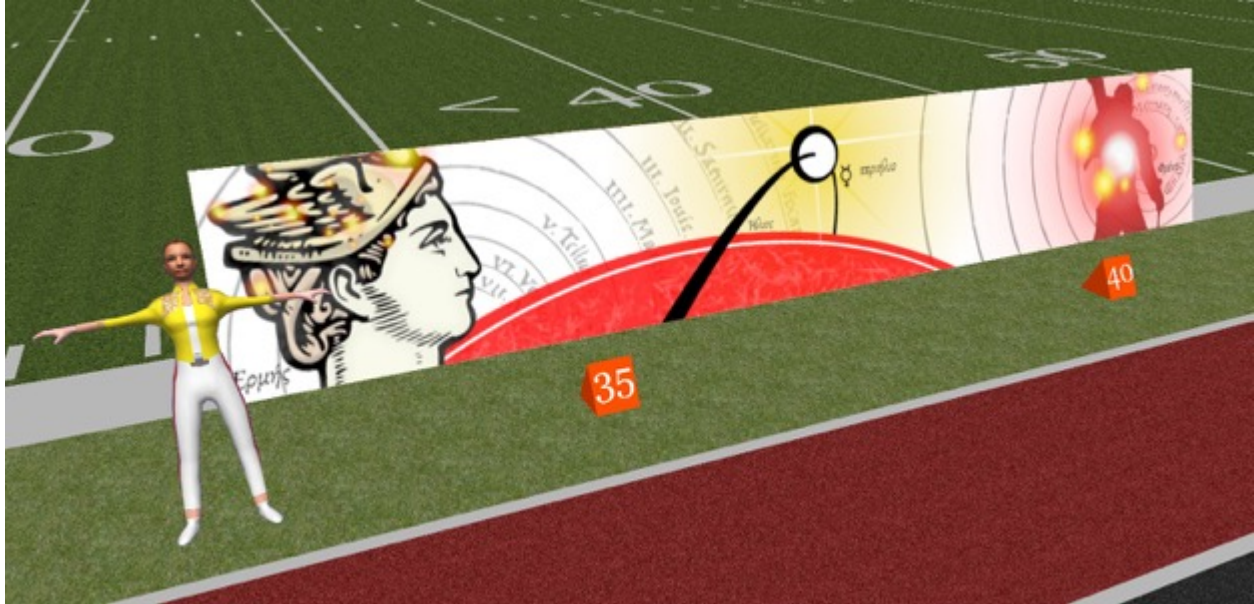


The exact number of thermometers can be adjusted to suit your needs. For smaller ensembles, they serve as the perfect way to 'frame the stage' and make your group seem larger and more impactful.



As the show progresses, more and more of the red is revealed until finally filling the thermometers for the big finish of the program. Above, we see the thermometers as they might appear for Movement 2, and below as they would appear for Movement 3.



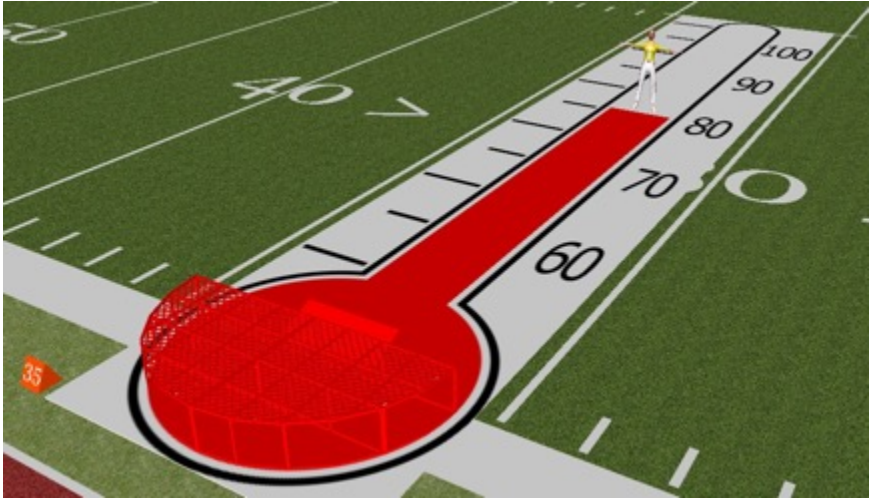
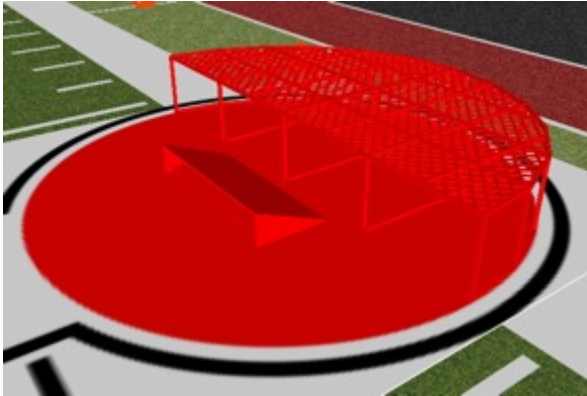


Front screens are another simple way to frame the stage, and also clean up the area used for many color guard transitions. In addition, they provide a place to demonstrate show imagery right away to an audience and establish theme. For Mercury Rising, we have designed front screens which showcase the many meanings of 'Mercury': god, planet, and superstar. This imagery is carried over into the guard design—silks and costuming—for a unified visual language across the concept.

Our front screens are designed to utilize 3 of the [Corps Design 5 x 10 Sideline Screens](#), with high-quality digital printing available via FMP. Or, allow our artists to customize the sizing to suit screens you already have.



For a truly huge visual impact, we have designed an option which cleverly integrates a tarp with the [Corps Design Round Stage](#) to create a prop which not only shows the progression of the show's concept, but also serves as a staging area for featured soloists or small ensembles. A large tarp printed with a gigantic thermometer uses a smaller strip of tarp material which is fan-folded and pulled out through the show as the 'mercury rises.'





Want even more of a visual punch? Optionally, the frame beneath the Round Stage allows the mounting of LED lights to really push the 'rock star' aspect of Freddie Mercury in the final, exciting movement of the show.

High-quality digital print tarps are available via FMP.

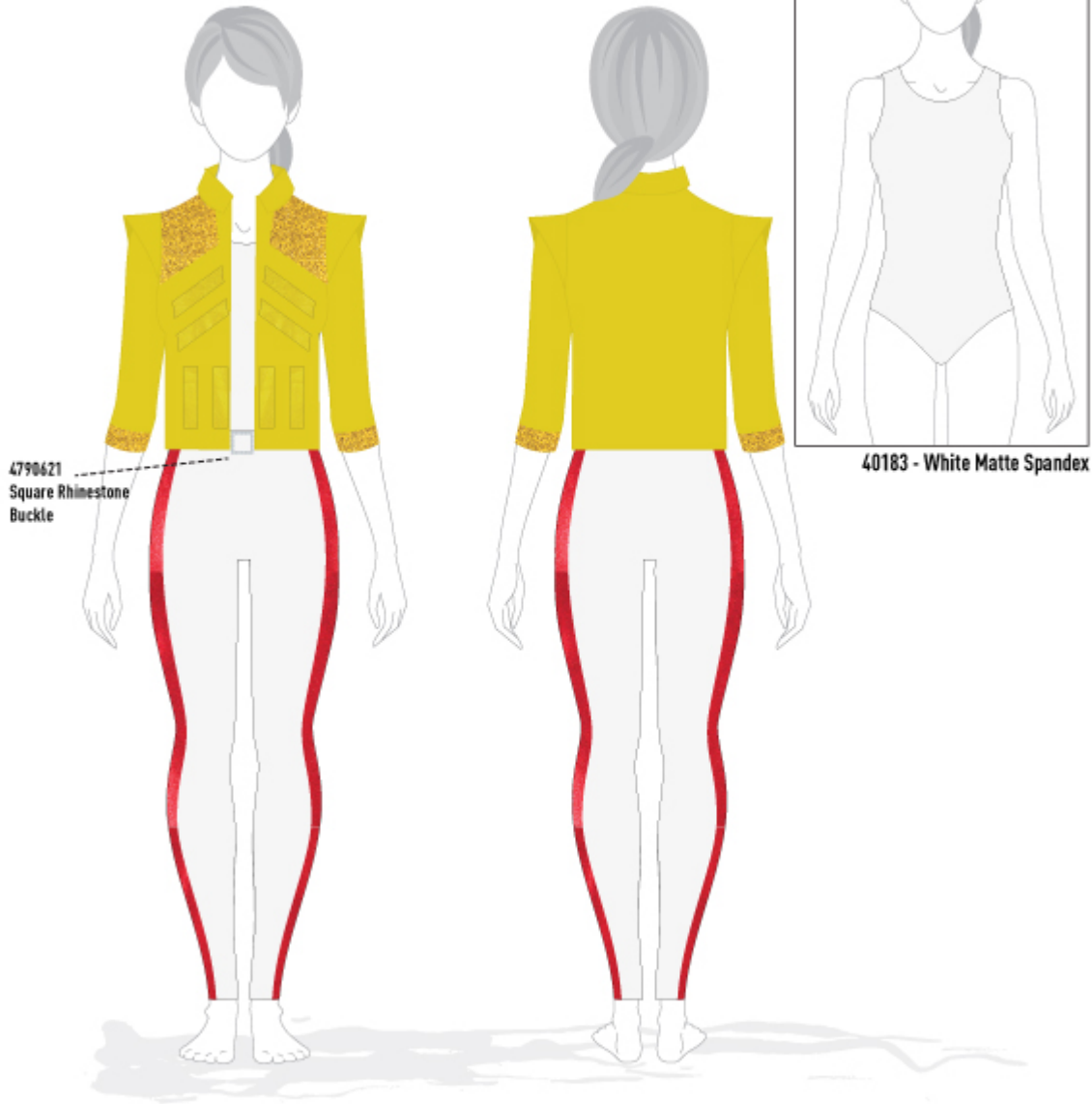
Flag & Costume Design



BAND SHOPPE® GUARD UNIFORM DESIGN FOR

Mercury - JFMP

CustomGU_A



COLORS USED

- WHITE MATTE SPANDEX
- RED MYSTIC JEWELS
- MUSTARD MATTE SPANDEX
- YELLOW MICRO SEQUIN
- YELLOW MYSTIC JEWELS

EJF_LLL

I APPROVE OF THIS COLOR GUARD UNIFORM DESIGN: as shown with changes

PLEASE SIGN HERE

SIGNATURE: _____



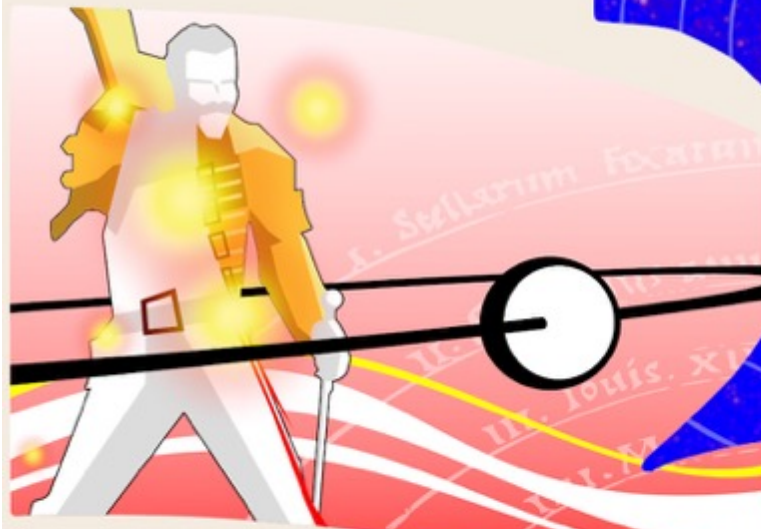


OPENER

MERCURY RISING

MERCURY AS GOD, PLANET, & ROCK STAR

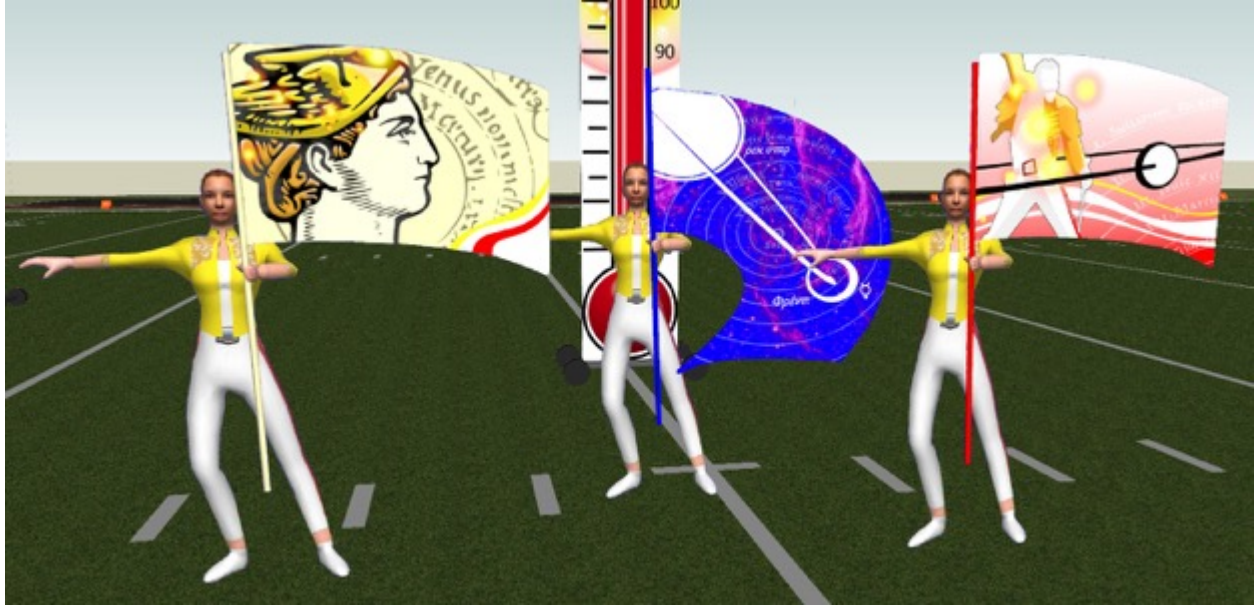
3 SILKS CONNECTED VIA SHARED IMAGERY TO EACH OTHER, COSTUMES, & PROPS



CLOSER

BALLAD OVERSIZED SWING FLAG





The guard design for Mercury Rising makes your performers into the rock stars they were meant to be. Our partners at Band Shoppe have created a costume based on one of Freddie's most iconic looks—in a lifetime that was filled with iconic looks—that will be flattering on all performers. For an extra kick, pair them with white Adidas as Freddie himself did! Meanwhile, the flag silks connect to each other, the costumes, and the prop imagery for a unified visual impact that demonstrates the mythic progression of Mercury god, planet, and superstar.

Tying it All Together: 'Totem' Props Option



How do all these elements work together? First, we will walk through the show using the 'totem' props and a single front screen. Above is a possible scene from the Opener, and scenes from the Ballad and Closer follow. As you can see, the 'framing' effect of the totem props is ideal for maximizing the visual impact of a smaller ensemble.





Tying it All Together: Tarp-Stage Props Option



Next, the tarp and stage option, which really ups the visual impact and clarity of the 'mercury rising' in the thermometer. Above is a possible scene from the Opener, and scenes from the Ballad and Closer follow.





Created with Pyware 3D®

