

Earth, Wind, & Fire

FANNIN MUSICAL PRODUCTIONS

RQSS



In the West, the elements are raw, unrefined and an undeniable force to be reckoned with. In *Earth, Wind, & Fire*, the FMP team brings your students into direct contact with the natural elements of the Old West's untamed vastness.

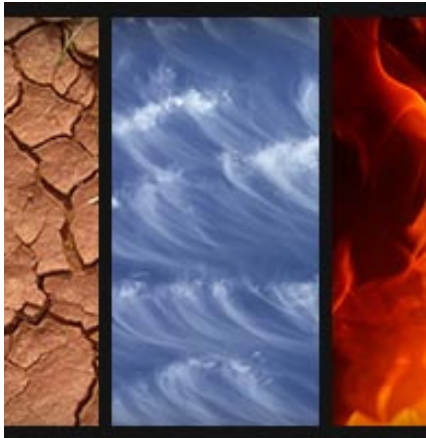
Using surprising arrangements of Michael Jackson (*Earth Song*), Ennio Morricone (*The Good, The Bad, The Ugly*), Kansas (*Dust in the Wind*), Cody Fry (*Underground*) and Johnny Cash (*Ring of Fire*) that your audience is certain to recognize and love, *Earth, Wind & Fire* will transport your band to the gritty land of the American frontier.

Feel the dirt in your hands, the wind in your hair, and the sun on your face as *Earth, Wind & Fire* takes your band on a Western odyssey they won't soon forget.

Set design, costuming, and color guard flags take on a western vibe and could easily be customized to fit any budget. The set could have flats with western town images or more of a nature's scape look. The possibilities are endless!

Inspiration

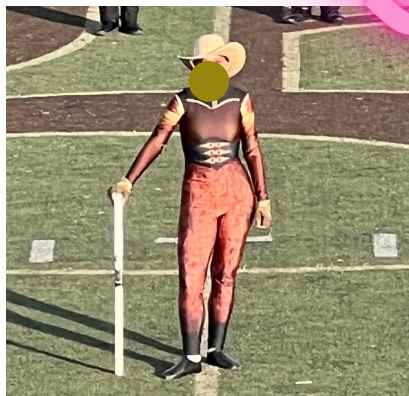
RESEARCH & BRAINSTORMING



IMAGERY

Earth
Wood/Air

- Fire, hot flames
- Cowboy hats & bandanas
- Parachutes
- Wagon Wheels
- Wooden Barrels
- Western swagger style
- Tumbleweeds



BIG PICTURE

IDEAS

COLOR GUARD MEMBERS

- Western Character

DRUM MAJORS

- If you have 3 DM's-you could give each of them a special uniform symbolizing Earth, Wind, and Fire

BAND MUSICIANS

- Dress them with cowboy hats, bandanas, vests or traditional uniforms

Each movement represents a different element.

Part 1- EARTH

Part 2 - WIND

Part 3 - FIRE

PROP IDEAS: *use as many props from these as you want.

• SCENIC PROPS

- 4- sided tower frames or simple flats that are digitally printed
- Saloon Doors that could be used for staging moments (fully swinging)
- Wagon wheels, barrels, telegraphs, wagons, etc...
- Tumbleweed props - could get a ball and print tumbleweed artwork on fabric to cover it
OR make your own simple tumbleweed to use.
- Stage that turns into a giant fire pit by end of show.
 - See end of [Boston Crusaders 2017 show](#)

• FRONT SIDE PROPS— OPTIONAL

- Earth, Wind, Fire artwork
- Western artwork option



**PURCHASE PRINTED
VINYL, PROPS, FLAGS
FROM ROSIE QUEEN
@FIELDANDFLOORFX**

PRODUCTION IDEAS



OPENER --EARTH

Musical Mood: *The Good, the Bad, the Ugly*, Michael Jackson's *Earth Song*, Cody Fry's *Underground* all come together to create this epic 3 minute Opener.

Visual Approach: Set the stage of our western setting in the first 30 seconds as Ennio Morricone's *Good, the Bad, Ugly* starts us off. The drama builds for the first 1:30 and then a lightness shines through.

Color Guard:

CG members would begin on stage with cowboy hats and establishing the western character for picking up 6 ft. flag for the rest of this movement. If you have rifles, you should spin them in this movement.

PART 2--WIND

Musical Mood:

FX begins with the wind blowing and sets the stage. The familiar Kansas tune *Dust in the Wind* and the *Good, the Bad, the Ugly* are beautifully intertwined to create this beautiful movement.

Visual Approach: Utilize the idea of western duels during this movement. Pairings used with staging of CG and band could help create a very dramatic scene.

You could utilize a parachute to create big impact to fill the field with color and really show the idea of air/wind taking over the space.

Color Guard: Utilize CG with pieces of fabric attached to feet and hands to create a parachute idea OR utilize large swing flags during this piece.



PART 3 --FIRE

Musical Mood: This fast-paced movement kicks off with a percussion feature as Johnny Cash's famous *Ring of Fire* reflects that western build to a fiery finish.

Visual Approach: Utilize the fabric fiery flames (with fan) for the last big impact of this movement to create a special GE moment.

Color Guard:

Rifles can make a comeback in this fiery movement. This movement will end with the full color guard on our fire flags covering the entire field.

