



Life On Mars

FANNIN MUSICAL PRODUCTIONS

RQSS



"Life On Mars" is a dynamic and imaginative marching band show that takes audiences on a journey through the cosmos.

The show begins by evoking the grandeur and mystery of the red planet with *Life on Mars* by David Bowie. You will notice the constant thread of *Mars* from Holst's *The Planets suite* within a driving and dark second movement that encapsulates the barren lands, loneliness and isolation one would feel in outer space.

"Life on Mars" visual identity adds to the cosmic theme with scenic backdrops, choreographed movements and a center circular stage depicting the wonders of Mars and outer space.

The show concludes with a heartwarming rendition of Louis Armstrong's *What a Wonderful World*, reminding us of the beauty and wonder of our own planet. The gorgeous closer brings the show to a triumphant and uplifting finale, leaving audiences feeling inspired and awestruck.



@FANNINPRODUCTIONS



BIG PICTURE

IDEAS

COLOR GUARD MEMBERS

- Dressed in celestial galaxy prints.
- The color guard will set the mood that we are in another world.

PROP IDEAS: *use as many or as few of these as you want.

• SCENIC PROPS

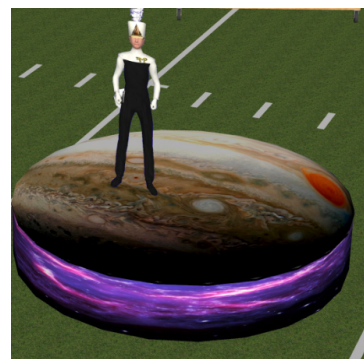
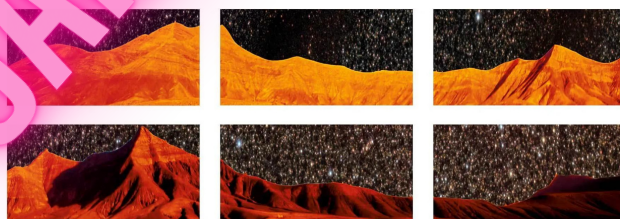
- One large 12 ft. diameter RED round stage with picture of Mars on it in printed vinyl. (2 ft. high)
- Add red LED lights to the rim of the stage.
- PICTURED BELOW: Options for you
 - Colorful galaxy print back drops
 - Mars landscape mountainous back drops

• STORYTELLING PROPS

- UFO prop --could be rigged with lights.
- If you wanted to play with the UFO idea, you could even have someone dressed in an alien costume for an interesting moment.

• FRONT SIDE PROPS (OPTIONAL)

- Front side line prop with Galaxy or Mars scenic artwork



PRODUCTION IDEAS



PART 1 -- LANDING

Musical Mood: The show opens with David Bowie's *Life on Mars* building into a gorgeous powerful impact.

Visual Approach: Set the stage, and establish the scene of landing on another planet. Build into strong marching band at first big impact about 40 seconds in.

Color Guard: Color guard members can start the show dancing, flags are set, helded lightly, and placed in line with yard lines. Guard will dance out to full field coverage set, pick up flags for the first big impact with an all field Guard moment.

PART 2 -- ISOLATION

Musical Mood:

This driving piece begins with the familiar *Mars* rhythm from *Holst's Planets*. This movement is dark and aggressive and is the perfect mood change showing the isolation and loneliness of being on another planet.

Visual Approach: This ominous piece will be represented with large red exercise balls that represent the planet of Mars. The balls can be used in many ways and CG choreography coordinated moments.

Color Guard: If color guard spins rifles, this would be the tune to use them! Color Guard members could be dancing with red exercise balls. Roll them to draw focus, throwing them, dancing with them, interacting with band members.



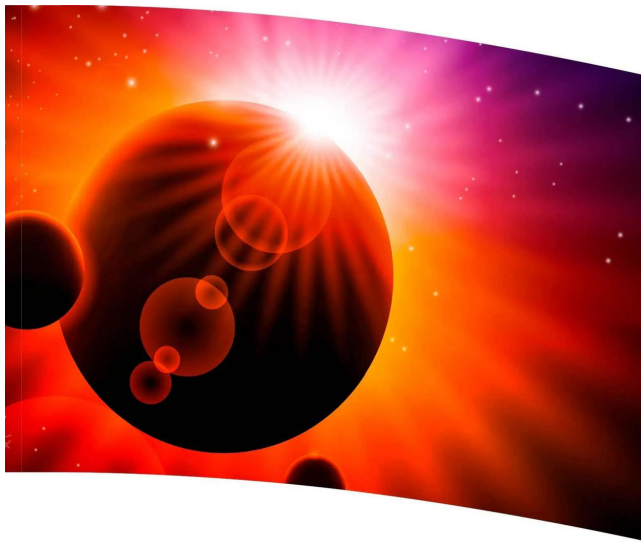
PART 3 -- BEAUTIFUL LIFE ON MARS

Musical Mood: The opening David Bowie music of *Life on Mars* is back in this gorgeous ballad. This piece culminates in a luscious full impact that lasts about 40 seconds.

Visual Approach: Finding the beauty in *Life On Mars* is the culmination of this piece. Star-studded skies, northern lights, floating in space. Epic beauty.

Color Guard: If your CG spins sabres, this would be the tune to use them in. The non-sabres will start building out on swing flag and ultimately the full guard will create a gorgeous full field moment filling the field with outer space swing flags which will turn to double swing flags for even more color at the culminating impact of this piece.





FLAG IDEAS

Part 1- Landing

6 ft. flag (36 X 54")
Curved rectangle

FLAG 2

Part 3--Life on Mars

ARCH SWING FLAG
78" X 60"
38" pole sleeve
40" drop



FLAG 3

Part 4-

Wonderful World

6 ft. flag (36 X 54")
Curved rectangle

Either image will work great.

MIX AND MATCH