



# Beethoven's Secrets

FANNIN MUSICAL PRODUCTIONS



Embark on the musical journey of "Beethoven's Secrets," a captivating marching band show that delves into the intriguing world of Ludwig Van Beethoven. Uncovering the genius behind the music, Beethoven had a reputation as a "mad" musical scientist. He hid many of his own secrets, including concealing his deafness in his later years. Crafted by John Fannin, Josh Powell, and CJ Barrow for Lumberton H.S. Band of Lumberton, TX., the score seamlessly weaves classical themes with the modern sounds of OneRepublic's "Secrets." This score is also available in a more playable version for younger bands.

"Beethoven's Secrets" is guided by Rosie Queen's & Scott Koter's visionary design, the show incorporates classical visual imagery of a mad conductor with a contemporary twist, promising a unique experience full of tasty little surprises. The musical exploration begins with OneRepublic's "Secrets," transitioning into "Beethoven's 5 Secrets" by Piano Guys. The show then navigates through Beethoven's 5th Symphony, the Moonlight Sonata, "Für Elise," and the Pathétique Sonata 1st Movement, showcasing the timelessness and innovation of Beethoven's compositions. "Beethoven's Secrets" invites you to enjoy an artistic journey, unraveling the mysteries behind Beethoven's music. Join us for a marching band show that beautifully merges classical brilliance with a touch of modern creativity.



@FANNINPRODUCTIONS



# PROP OPTIONS

**PICK & CHOOSE --Use all, some, or none of these.**

- **If your budget does not allow, the show will still work!**

- **BACK DROP PROPS**

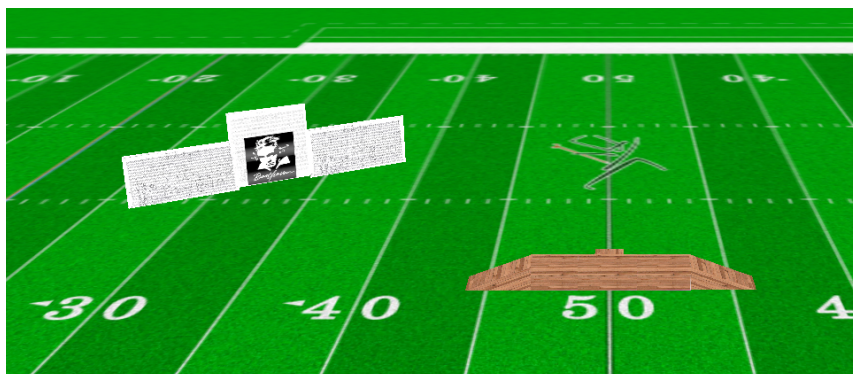
- **4 backfield screens 10 X 10 ft.- on wheels**
- **1 screen 14 X 10 ft.**

- 4 large back drop props and one smaller that is hidden behind the other two to reveal Beethoven image at the end of ballad.
- This "secret" image could be a number of different images shown here.

- **SCAFFOLDING PODIUM STAGE w/ ramps:**

- Could be placed center stage to host soloists and main events
- Covered in a vinyl skirt so members can hide behind it, equipment changes are possible behind it, and can hide the large "lover" behind it.
- Be mindful of not being too tall to cover too much of the field but tall enough that performers can hide behind it.

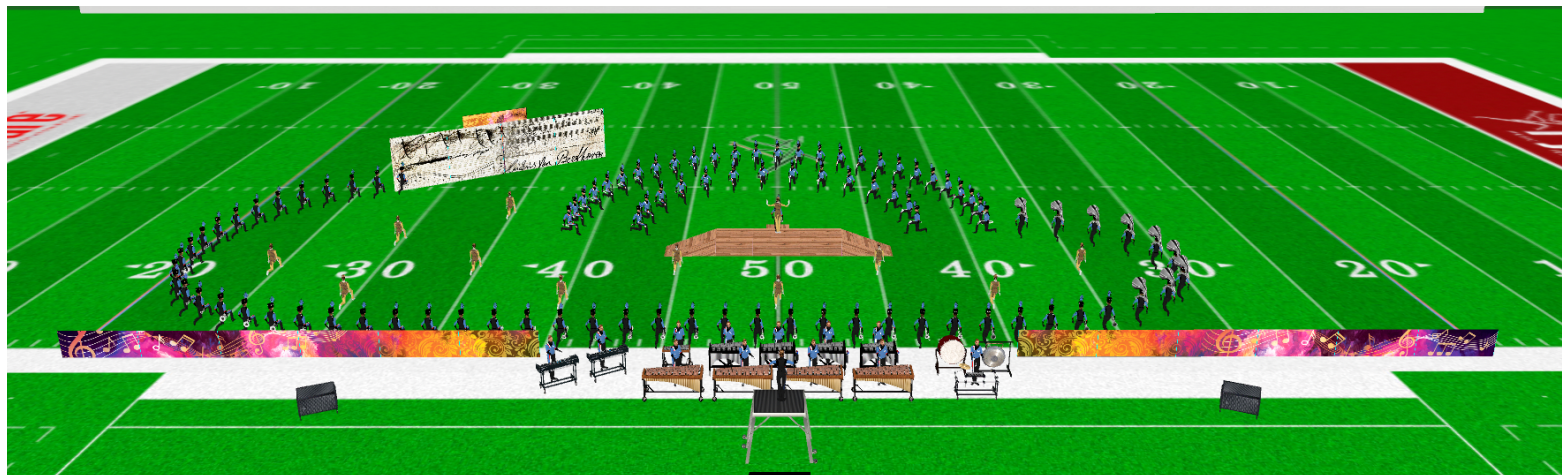
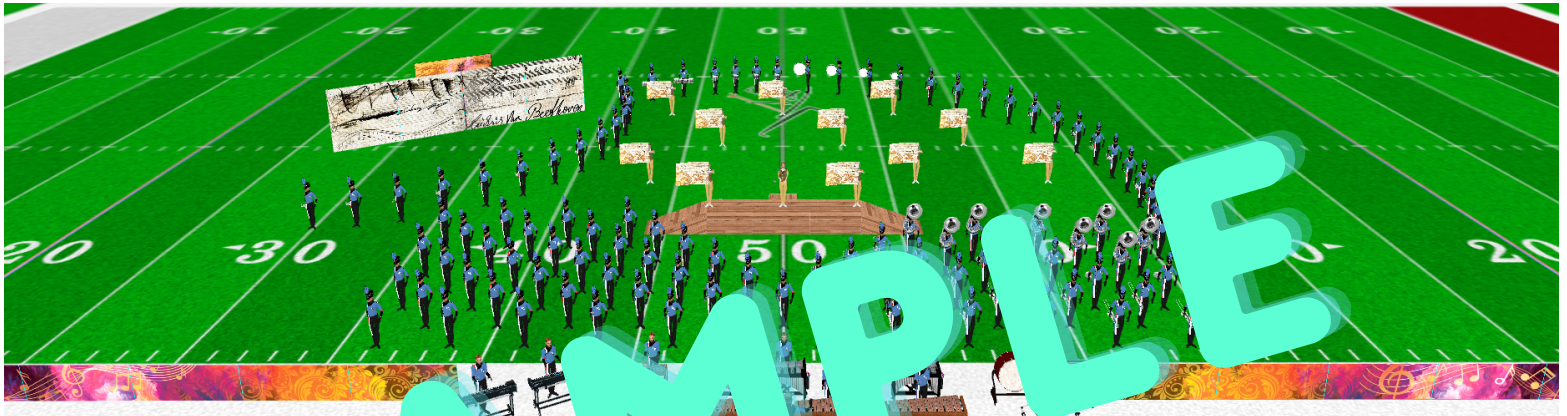
SAMPLE



# STAGING IDEAS

PART 1--

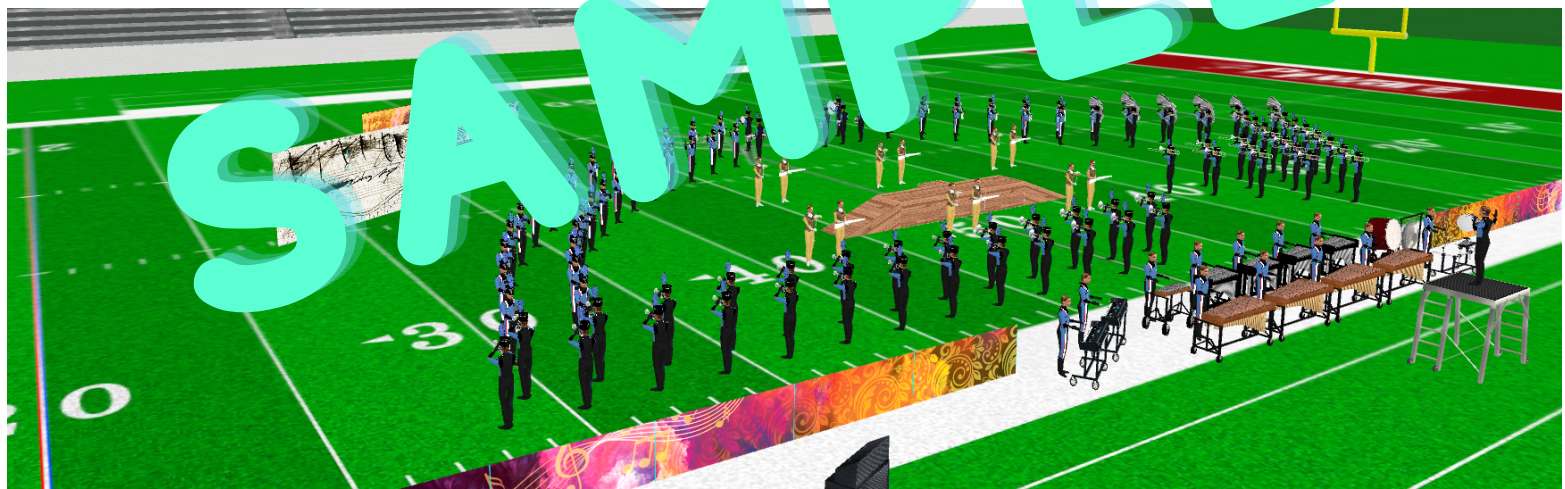
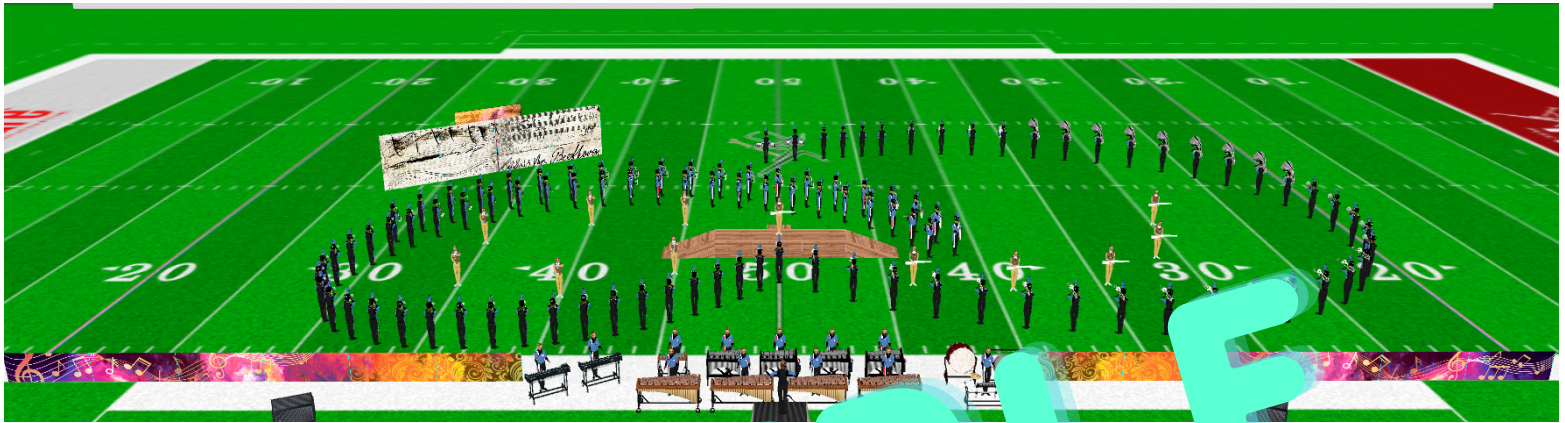
CLASSICAL. BUTTONED UP. INTRODUCE CHARACTER.  
CG-- MOVEMENT TO ALL FLAG. CAPE SOLOIST 1.

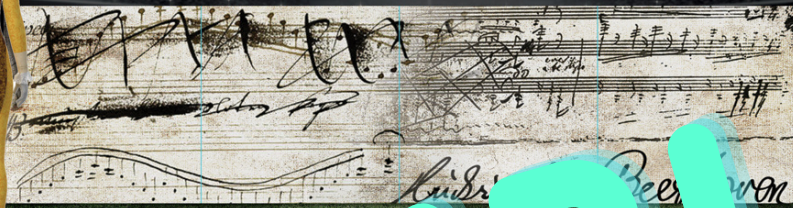
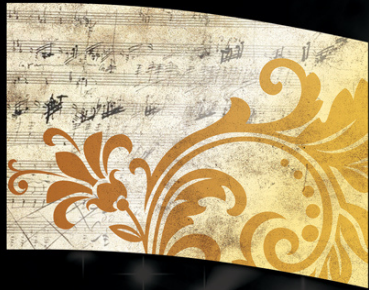


# STAGING IDEAS

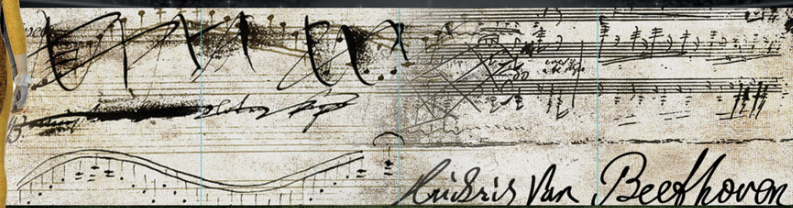
PART 2

TROMBONE FEATURES/GLISSANDO  
CG-- RIFLES (IF YOU HAVE THEM) & OVERSIZED  
BATONS TO DANCE WITH





SAMPLE



SARA SOLOMONSON



Rosie Queen SIGNATURE SERIES



SAMPLE

Extra Performers



Drum Majors

CG

