



X Marks the Spot

Fannin Musical Productions

Overview

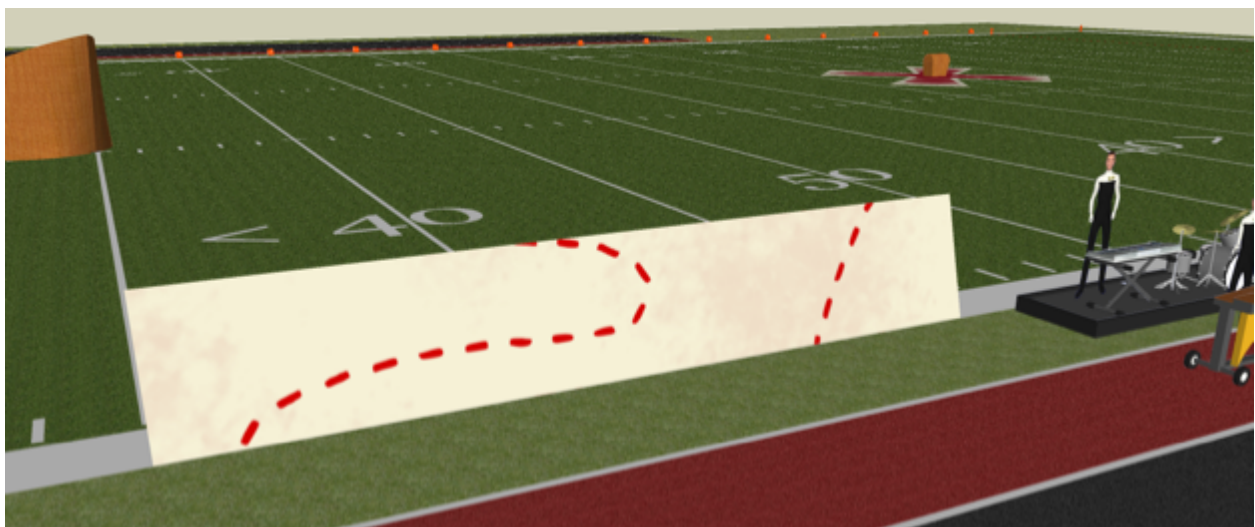
X Marks the Spot tells the tale of a band of rugged pirates who find themselves shipwrecked upon a mysterious island, and drawn by the siren's song of treasure into a web of suspicion and betrayal. Featuring exciting, original music, an intriguing, relatable storyline, and a surprising, twist ending, this show is certain to entertain students and audience members while appealing equally to judges.

Set Design



Zodiac uses several props to immediately set a mood of swashbuckling adventure and prep the viewer for the effects to come.

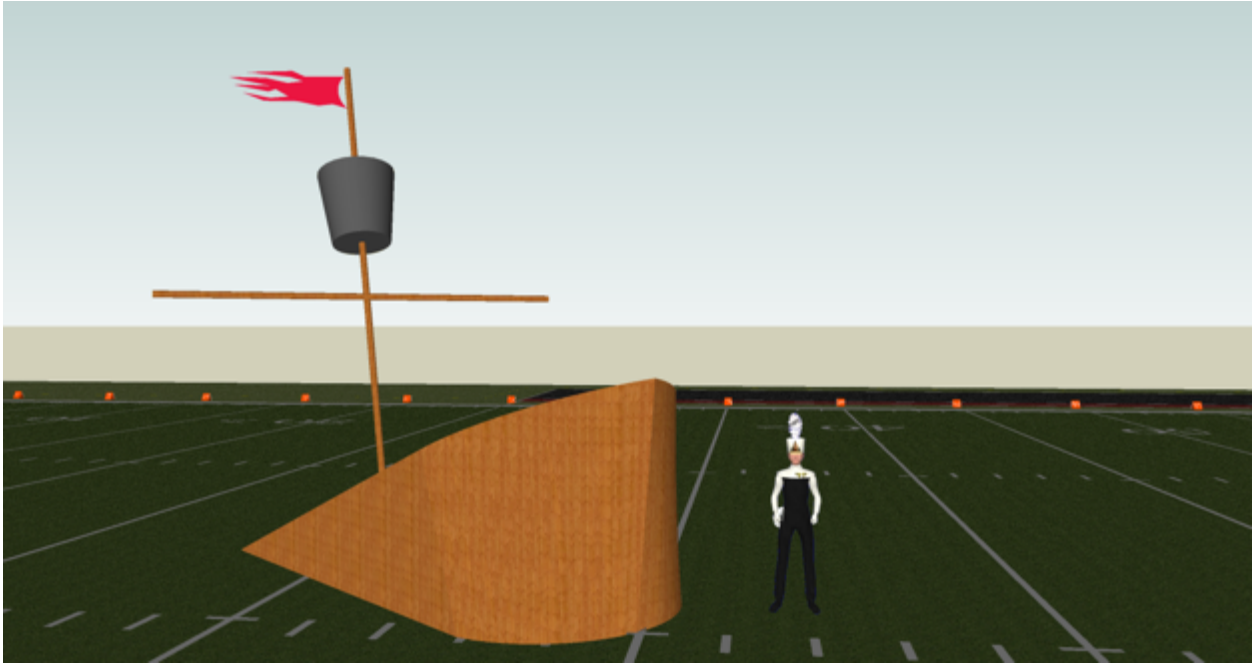
Along the front sideline, two screens serve as staging areas for equipment changes and for an important 'reveal' in the first movement.



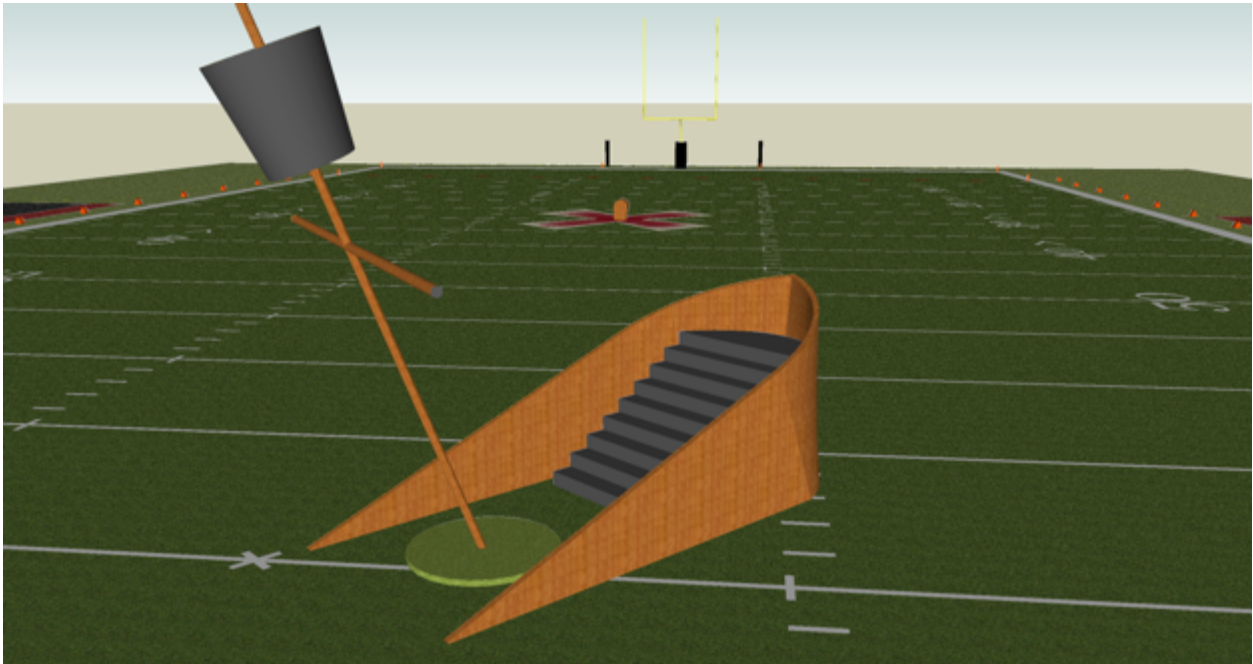


Backfield, a large 'X' shaped tarp draws the eye for the discovery of the 'treasure' as a key effect in Movement 2. The inside of the chest is lined with reflective material, and after being carried forward in the ballad, bright, LED lights are turned on to create a sparkling, 'treasure' effect.





The largest prop in the set, a stylized, wrecked ship, serves several purposes in the show. Initially, it helps to establish the scene and mood of the show. As the show progresses, its primary function is to serve as a stage for the featured soloist who appears, siren-like, throughout the show.



Costuming and Flags



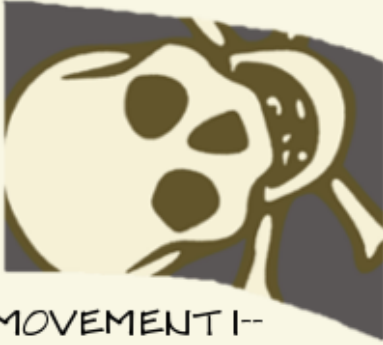
GUARD CONCEPT
SKETCH

OPTIONAL HEADBAND TIED TO
GOLD HIGHLIGHTS ON JACKET

1 OR 2 PIECE BODYSUIT UNDER
DOUBLE-BREADED JACKET--
TIGHT OR LOOSE LEG TO
PREFERENCE ABOVE BOOT

FAUX, FOLD-OVER
BOOTS, ACTUALLY
TIGHT-LEG GAITER
OVER BLACK SHOES





MOVEMENT 1--
ESTABLISHES
THEME



MOVEMENT 2--
ESTABLISHES
PLOT

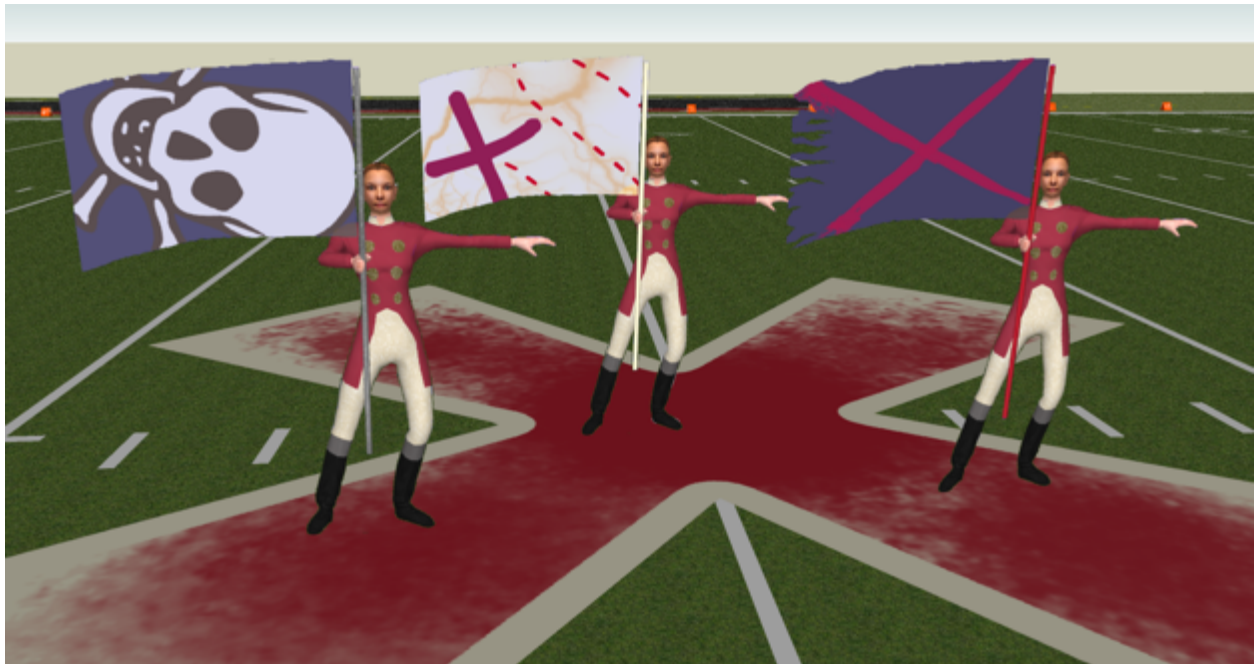


MOVEMENT 4--
CONNECTS TO
'BETRAYAL' IN PLOT

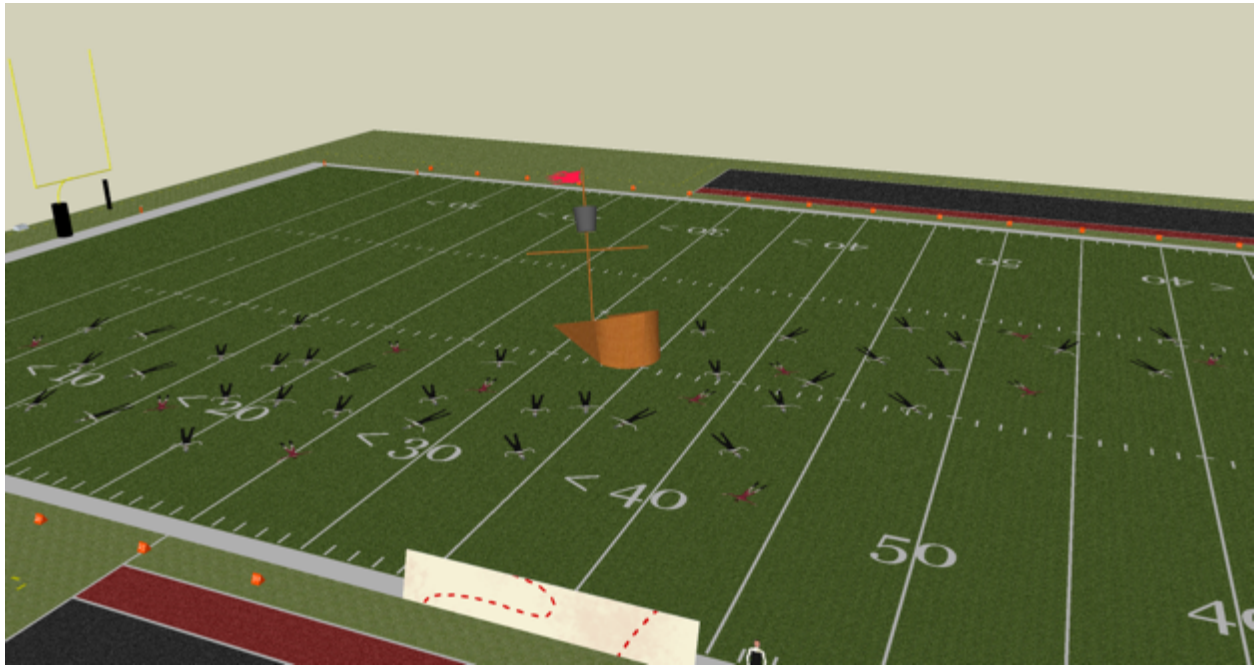
X MARKS THE SPOT: FLAG CONCEPTS
MOVEMENT 3 COULD BE A SIMPLE, OVERSIZED
GOLD FLAG



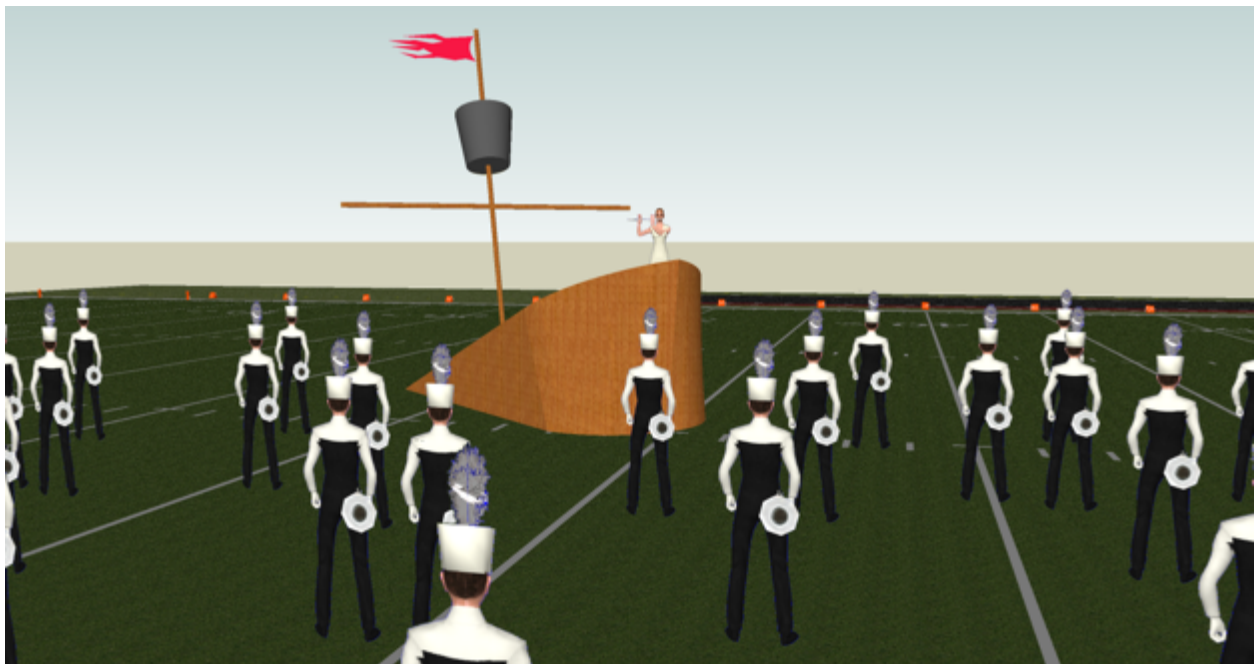
Fannin Musical Productions



Opener Effects



During the preshow wind, wave, and bird sound effects suggest the beach setting while the entire moving ensemble lies prone on the ground as though having just washed up after a storm. As the show proper begins, performers begin to awaken and stumble to their feet a few at a time, then turn to look at their wrecked ship as their attention is caught by the 'siren song' of a featured soloist.



The soloist is sketched here as a flautist and costumed separately, however both of these options could be changed to meet the needs and strengths of your ensemble.

As different sections of the group layer in, the drill and music develop towards our first musical impact statement, and introduction of the first silk with it's dramatic, oversized 'jolly roger' imagery.



As the impact statement builds, the horn form moves at half time towards the Side B front screen, drawing the eye to where some guard performers reveal a large tarp/flag, representing the discovery of the map that will drive our story forward. This could be made in several ways, with large scale, high-quality digital printing available at Band Shoppe.

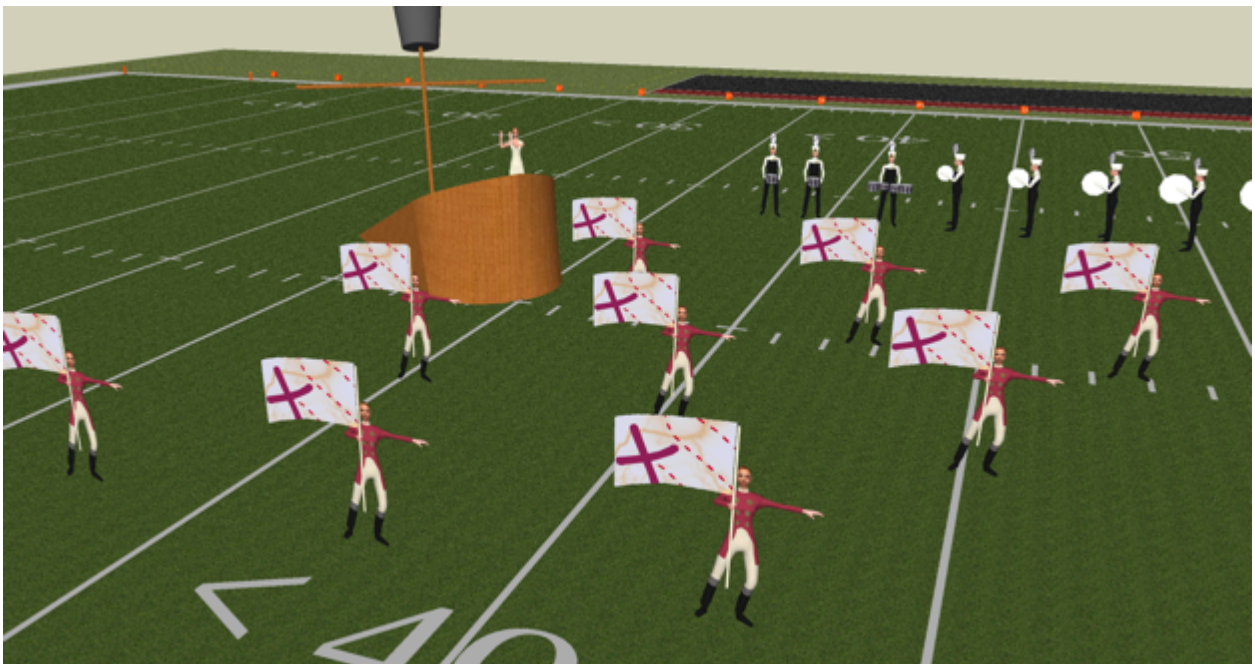


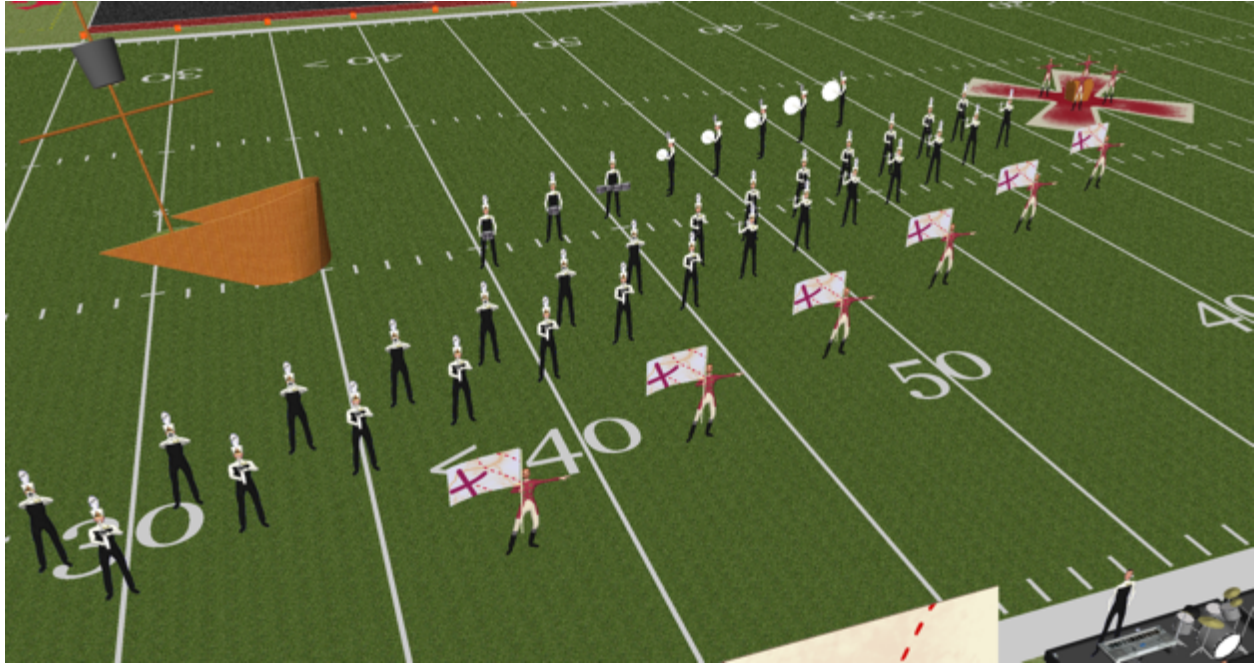
Movement 2 Effects



After the map introduction in Movement 1, the guard spends the first part of Movement 2 transitioning to the map silk, which is introduced from the map themed front screens. Beginning in the low brass and growing into the entire musical ensemble, a questing, searching musical motif develop through the music and drill towards the next statement of the featured soloist.

As the search for the treasure is now fully underway, the 'siren song' of the soloist returns to symbolize that search.





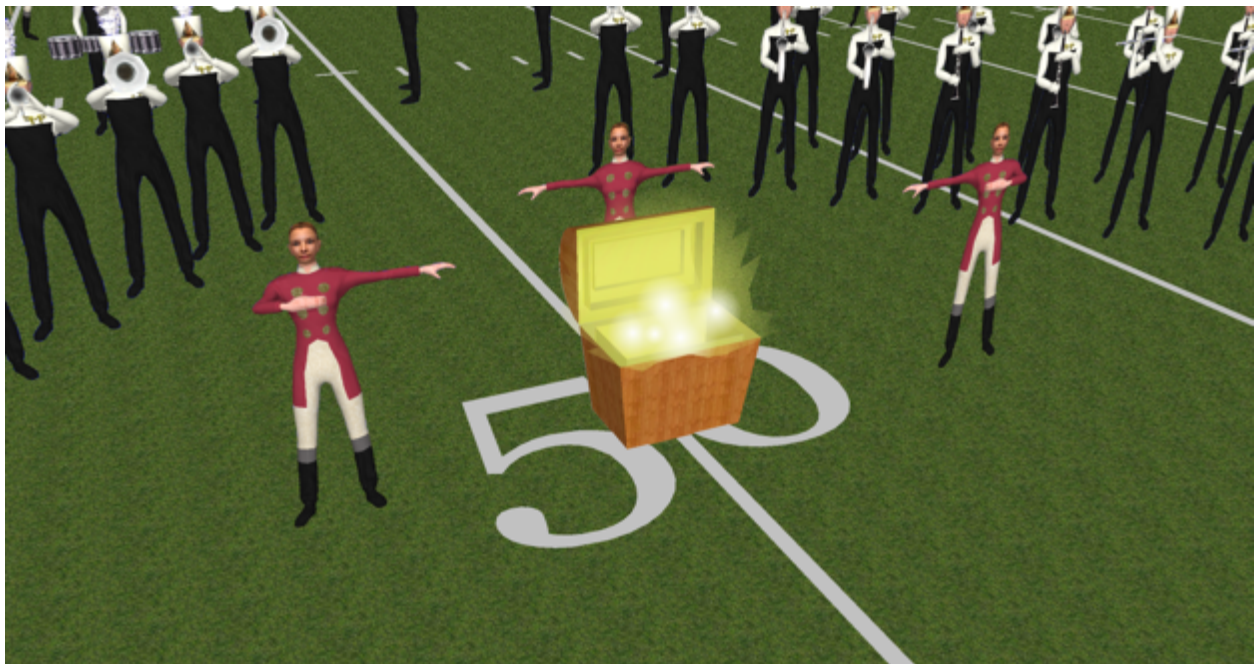
As Movement 2 builds to its end, drill evolves into long diagonals [across the judge's vision-easy to teach and clean] which draw the eye towards the 'X' tarp. There, a small group of guard 'discover' the treasure chest.



Movement 3—Ballad—Effects



As the ballad begins, the long diagonals that drew our attention to the treasure chest now evolve into curvilinear forms, outlining a path along which the chest prop is brought dramatically towards front field. Meanwhile, the rest of the guard artfully transitions to an oversized, gold flag. After reaching center field at the musical high point of the movement, the chest is opened to reveal the glittering, LED lit interior.



While several dancers featured around the glittering, sparkling treasure chest the rest of the guard spins a dramatic, oversized golden swing flag connected to this moment in the narrative.



Movement 4 Effects

The Closer begins on a positive note, with the return of the 'siren song' soloist to which many of the performers turn their attention.

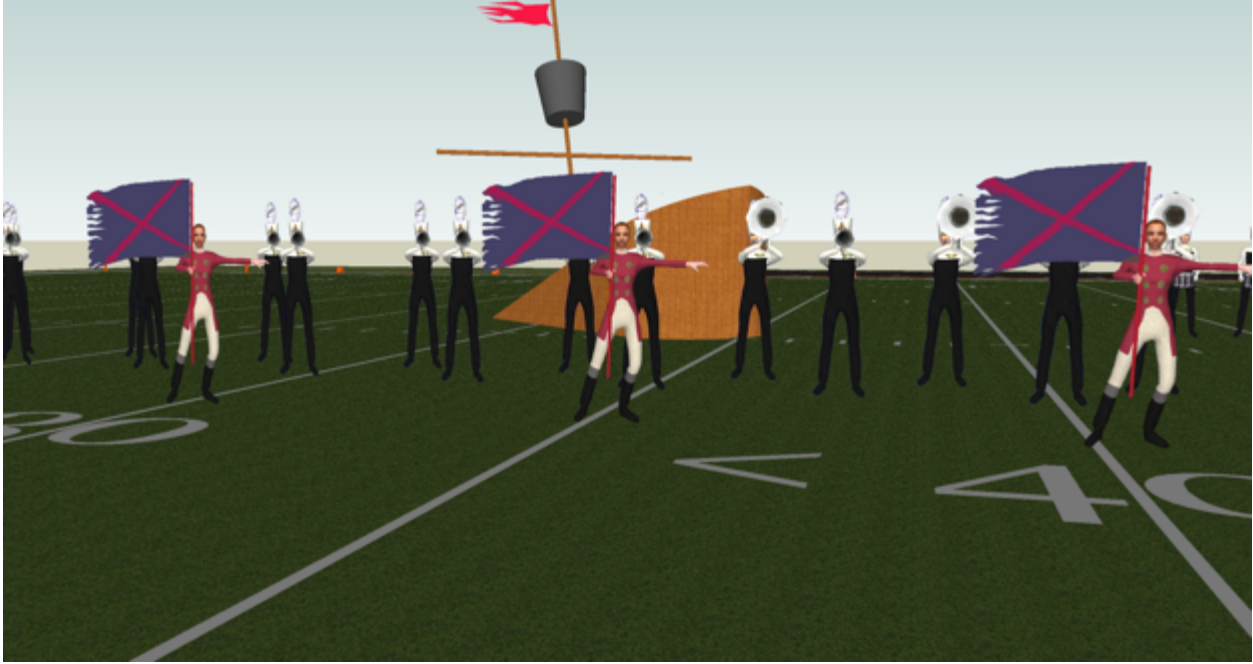


...but the mood immediately switches musically to a more menacing, combative tone, visually conveyed by one guard performer slamming the chest and glaring at the others with menacing greed. As a percussion interlude begins, the horn line performers pair up and perform argumentative, angry body work as though fighting and shoving each other. If desired, this would be a perfect moment in the show for the guard to introduce weapons, either rifle or saber being appropriate.





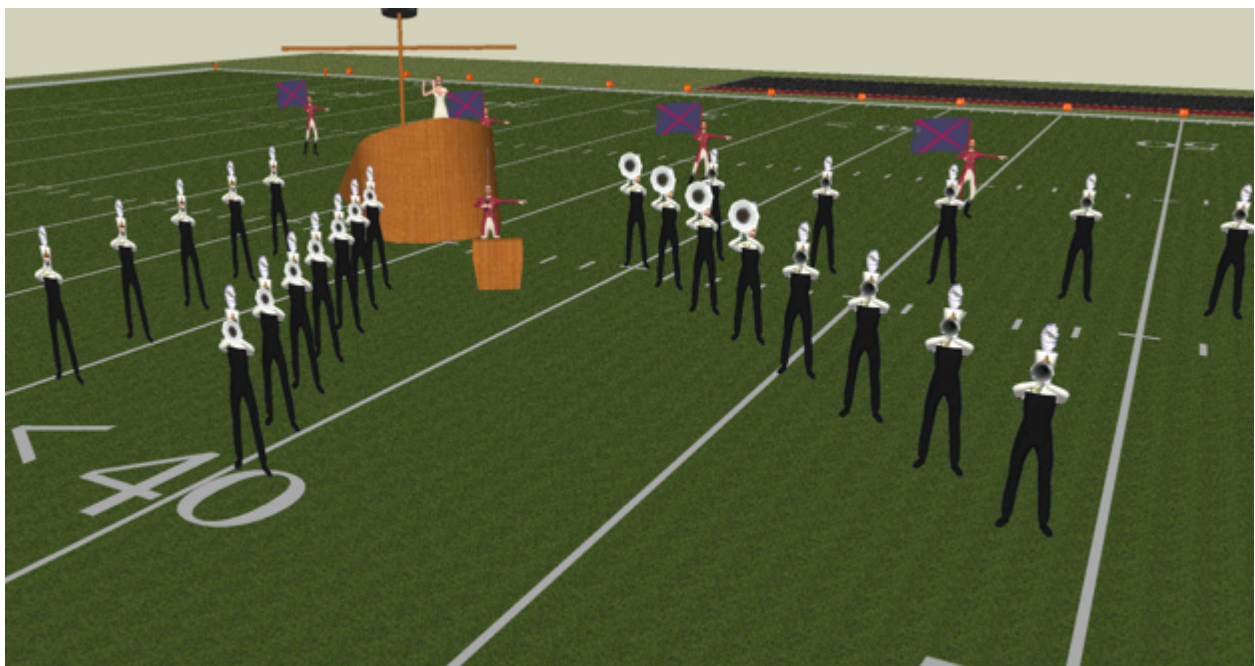
As the horn line begins to reenter, [first the low brass] the fight scene continues up front with some of the guard remaining on saber. Meanwhile, the rest of the guard introduces the final silk: a purposefully distressed red 'X' designed to convey the sense of betrayal and anger.



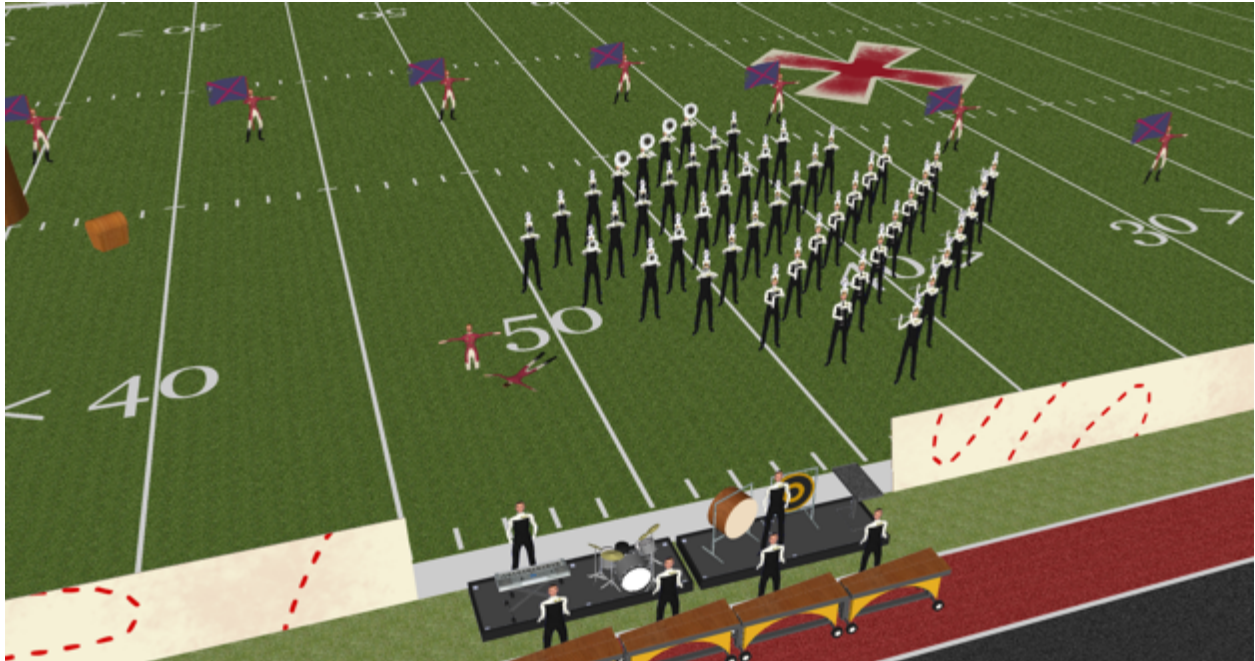


As the music continually builds towards its dramatic climax, one guard performer triumphs in her struggle for control of the treasure.

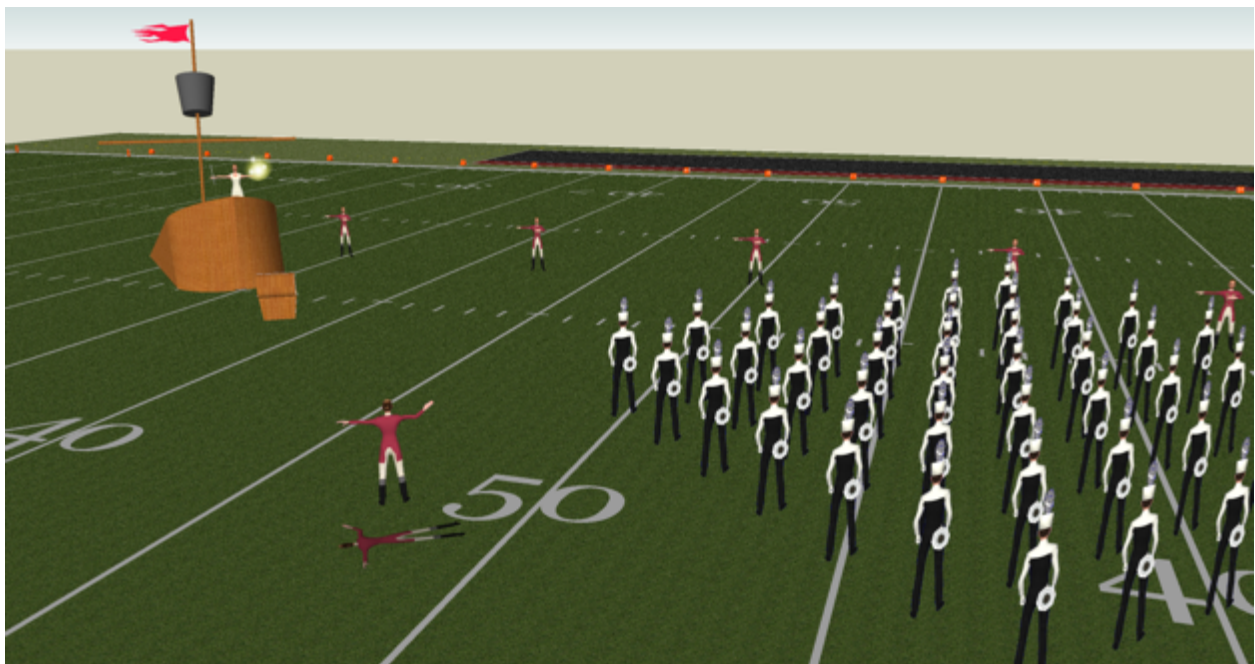
The soloist returns for a final time to play the 'siren song' motif as the triumphant guard member carries the treasure chest back towards the soloist and the wrecked ship. The rest of the visual ensemble frames the scene as she sets the chest down to enjoy her ill-gotten treasure.



...only to discover, as the music returns to angry, sinister energy, that the chest is empty. The guard performer opens the chest [no light], then dramatically turns it up and shakes it before throwing it angrily. The drill pushes forward one final time to the last impact, the formerly triumphant guard performer surrounded and frustrated.



After the final note, a sound effect cue causes the entire ensemble to turn and face the 'siren' soloist who holds up a bright, LED lit prop as though she has stolen the treasure herself... She then turns and walks down the back of the prop as a laughter sound effect rings out.



Created with Pyware 3D®

