



Hieroglyphs

Fannin Musical Productions

Overview

Hieroglyphs is FMP's take on the mysterious, legendary culture of ancient Egypt... and just as importantly, our modern fascination with it. Utilizing instantly recognizable musical motifs, but giving them a fresh, unfamiliar twist by visually referencing the vibrant, 'cosmic Egypt' of pop culture, this show manages to be both accessible and intriguing. No culture in human history has caused as much speculation and wonder as the Egypt of the pharaohs, and *Hieroglyphs* taps into this age-old fascination to entice audience and judges instantaneously.

Set and Prop Design



The set design for Hieroglyphs utilizes several familiar elements to pull the viewer in right away. Repeating pillar props and a tent like pyramid prop set the mood and scene.

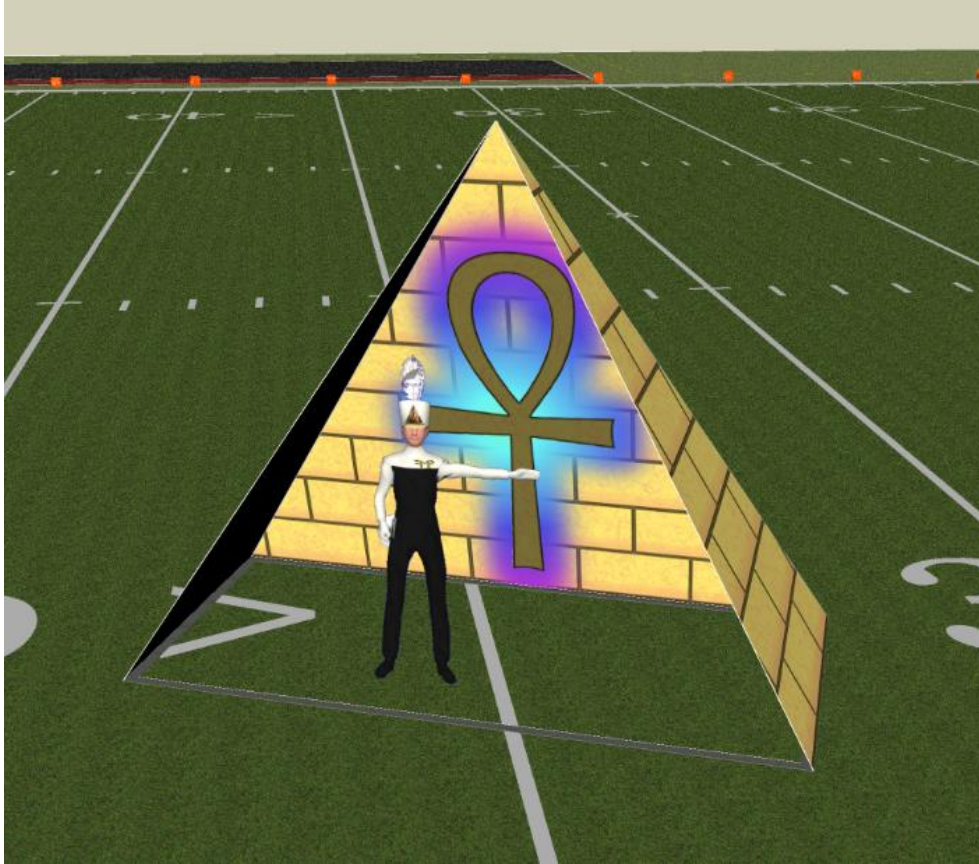




The repeating pillar props feature actual hieroglyphic inscriptions from the Temple of Karnak, each topped with one of the three iconic hieroglyphic symbols that tie the program together: the Eye of Horus, Winged Scarab, and the *Ankh*. These pillar props are designed to work on the same structural base as those used in our *War Dance* show, making them potentially useful for multiple seasons. High-quality digital printing available.

The second major prop, a simple, pyramidal, frame covered with digitally printed vinyl, serves as the focal point for one of the program's highlight effects.





During the ballad, it is turned to reveal the vibrant *ankh*, symbolic of eternal life. This serves as the perfect staging area for featured performers. Optionally, LED lights could be strung up inside the tent like prop to create an even more intensives area of focus.

High-quality digital printing available. Prop construction blueprints available.



HIEROGLYPHS

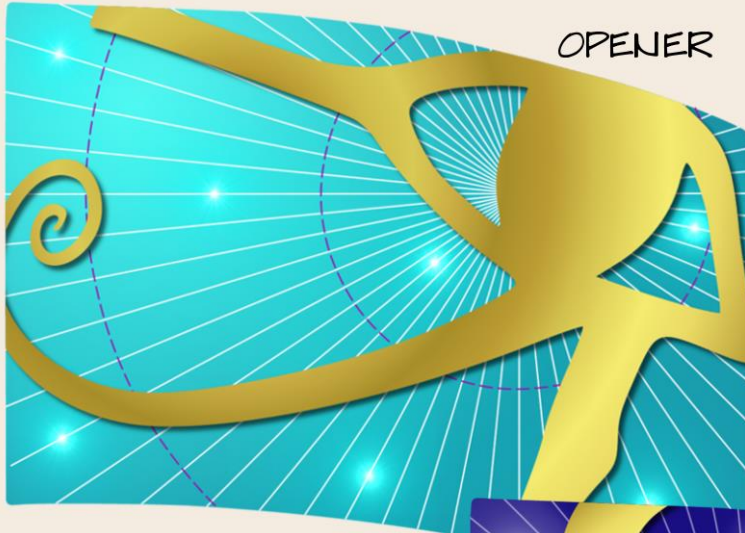
ONE-PIECE BODY SUIT WITH
APPLIQUE & GOLD LAME DETAILS,
FRONT DROP, AND BELT

OPTIONAL GOLDEN
COSTUME JEWELRY AT
HEADBAND, ARMBANDS,
EARRINGS

'COSMIC EGYPT' COLOR
PALETTE CARRIED OVER
FROM FLAG SILKS, PROPS

COLOR GUARD CONCEPT SKETCH





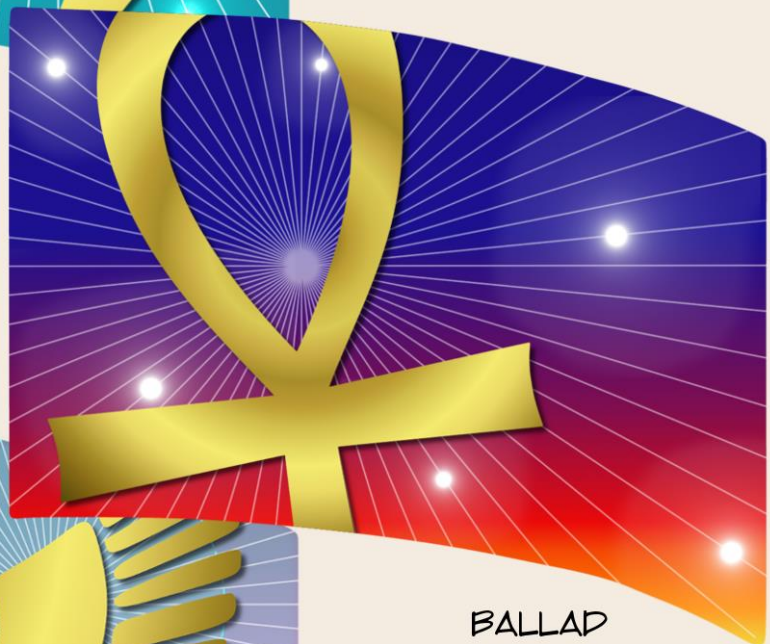
OPENER



HIEROGLYPHS

FLAG CONCEPTS

3 STANDARD SILKS UNIFIED BY USE OF HIEROGLYPHS & 'COSMIC EGYPT' COLOR SCHEME USED ON PROPS, COSTUMING



BALLAD



CLOSER

EACH REFERENCES HIEROGLYPH REPRESENTATIVE OF MOVEMENT: EYE OF HORUS, ANKH, SCARAB



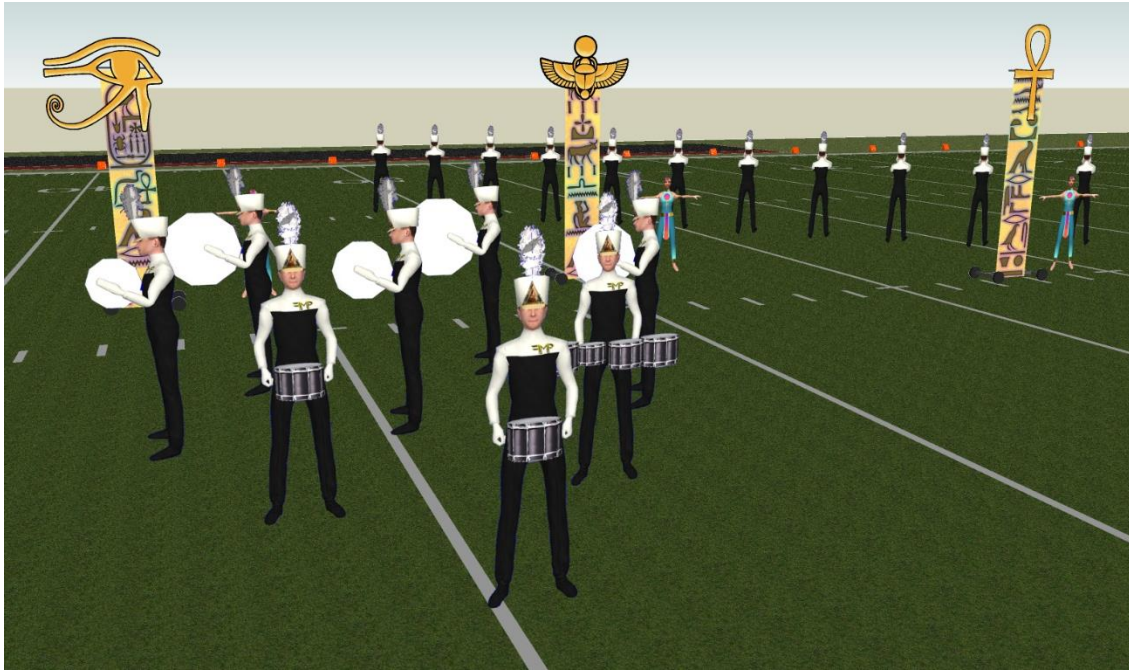
POWERED BY





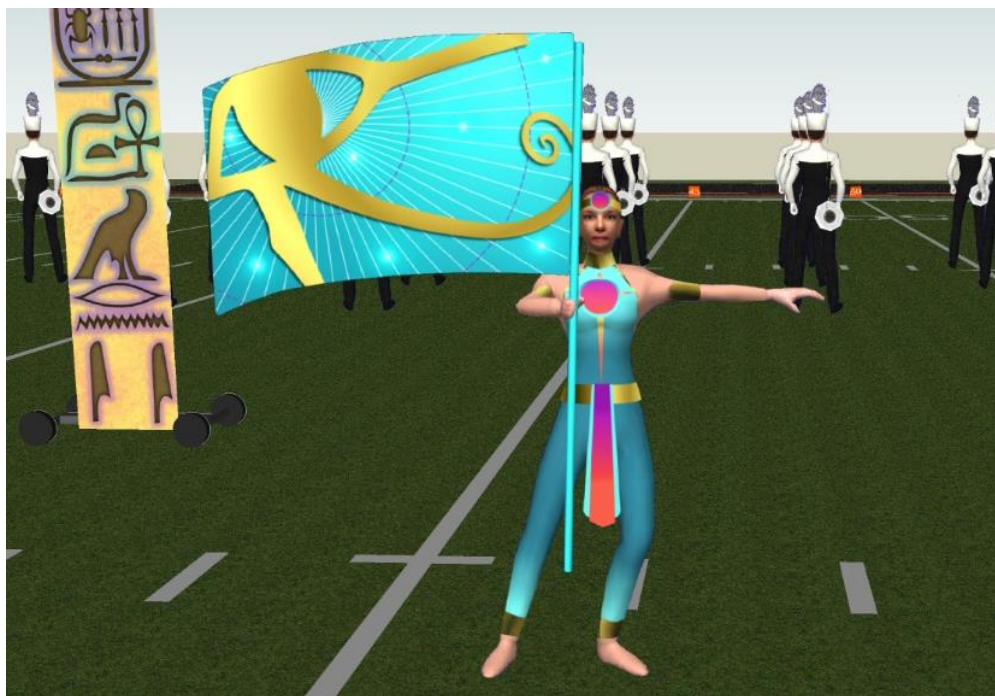
It is in the guard design that *Hieroglyphs* really sets itself apart from the typical 'Egypt show.' Bright, eye-popping colors taken from the 'cosmic Egypt' of 1970s pop culture jump out at the viewer against the dusty tans of the prop design. Each movement is characterized by its own iconic hieroglyph: the Eye of Horus for the Opener, the *Ankh* for the Ballad, and the Scarab for the Closer. Tied together, but also clearly distinct, the flag silks will wow your audience as each new color is introduced.

Opener Effects



After the mysterious [optional] soundscape, preshow, *Hieroglyphs* opens with a driving drumline focus, immediately building excitement. The hornline begins to filter onto center stage as the drumline recedes, prepping to take the musical focus.

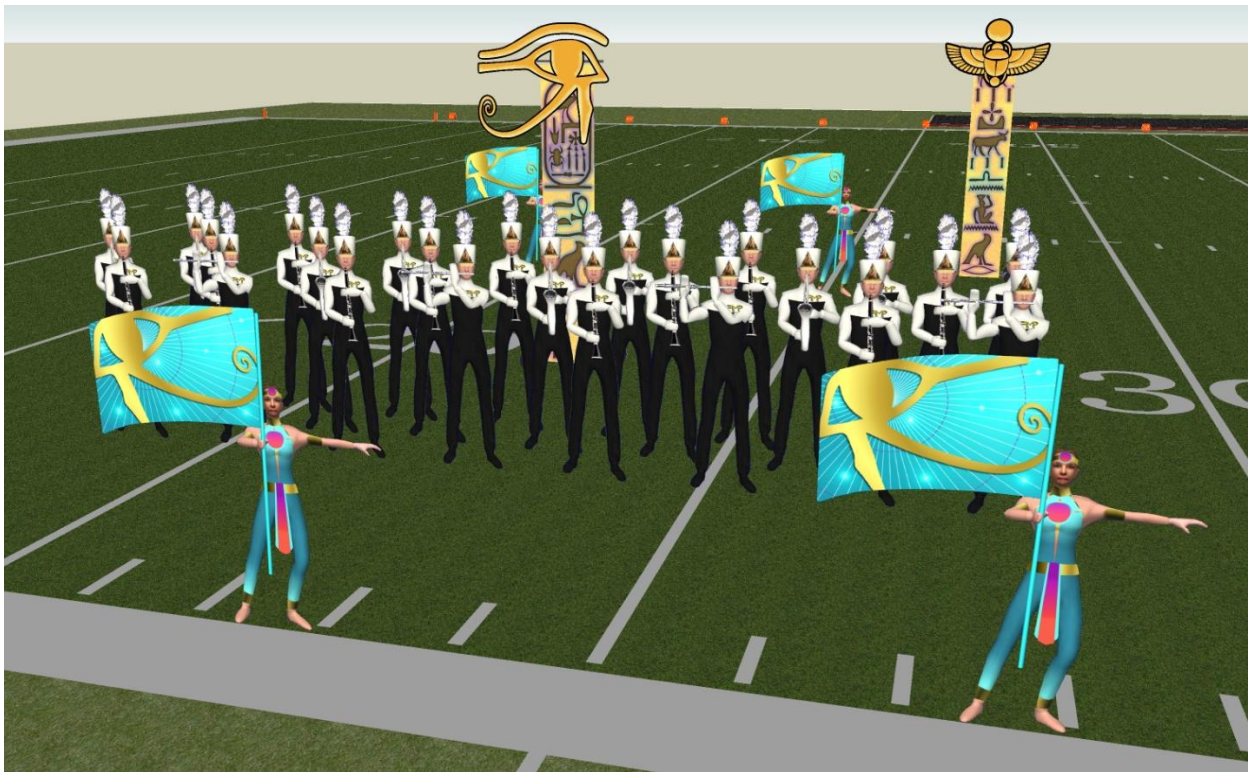
Meanwhile, the guard layers onto the stage from various staging points behind the pillar props, introducing our first silk: a beautiful blue and gold that sets the supernatural, ethereal tone of the program.

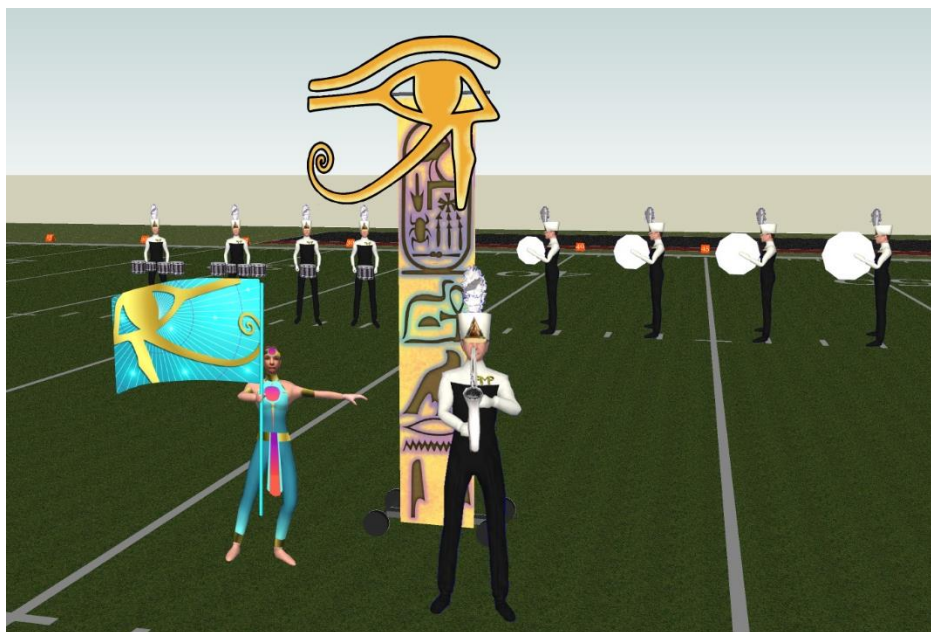




Punchy, brass impacts build inexorably to the first arrival point, a maestoso, full-ensemble impact with the full guard filling the field with the lapis lazuli blue.

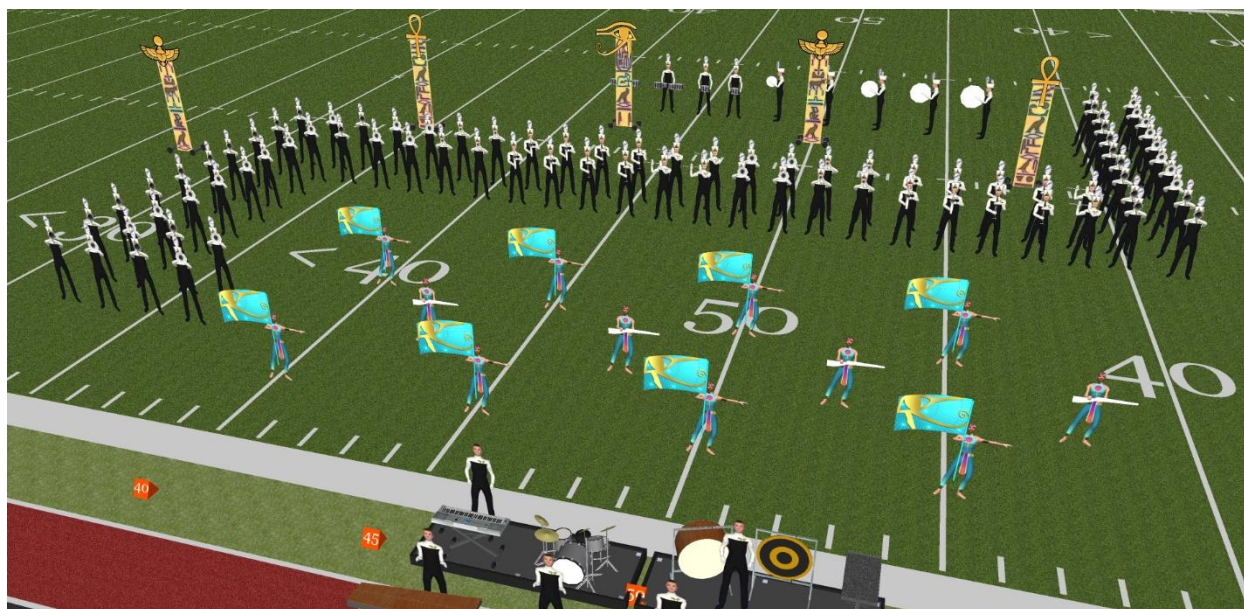
After a brief applause break and transition, your woodwind section takes center stage near one of the Eye of Horus props. Not only does this help to establish the theme of the movement but allows your students to demonstrate high-demand playing to the judges will still rested and relaxed.





Then, the focus shifts to a single player, also staged near an Eye of Horus, who can demonstrate further musical excellence. Originally written as a saxophone, allow our arrangers to adapt the part to feature your strongest individual player.

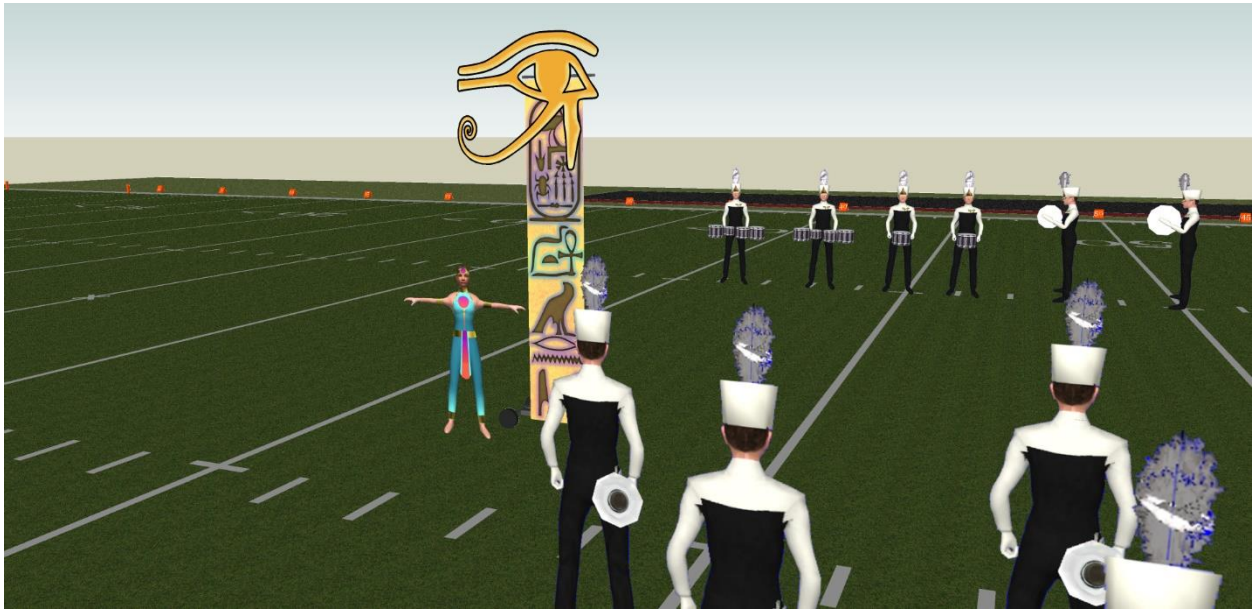
From here, the first movement develops these musical ideas through the full-ensemble, which coupled with driving drill and musician choreography builds the excitement towards the final impact. This also would be the perfect musical moment for some of your guard to transition to rifle or saber to demonstrate that skill, if you desire.





The opener concludes with an even larger full-ensemble arrival moment. A huge musical statement coupled with the guard on two types of equipment will have your audience out of their seat and waiting in anticipation for what comes next.

Ballad Effects



The ballad begins with a seamless musical transition guaranteed to please effect judges, during which the hornline restages for the next musical idea and draws the eye to the guard, who will introduce the next silk.

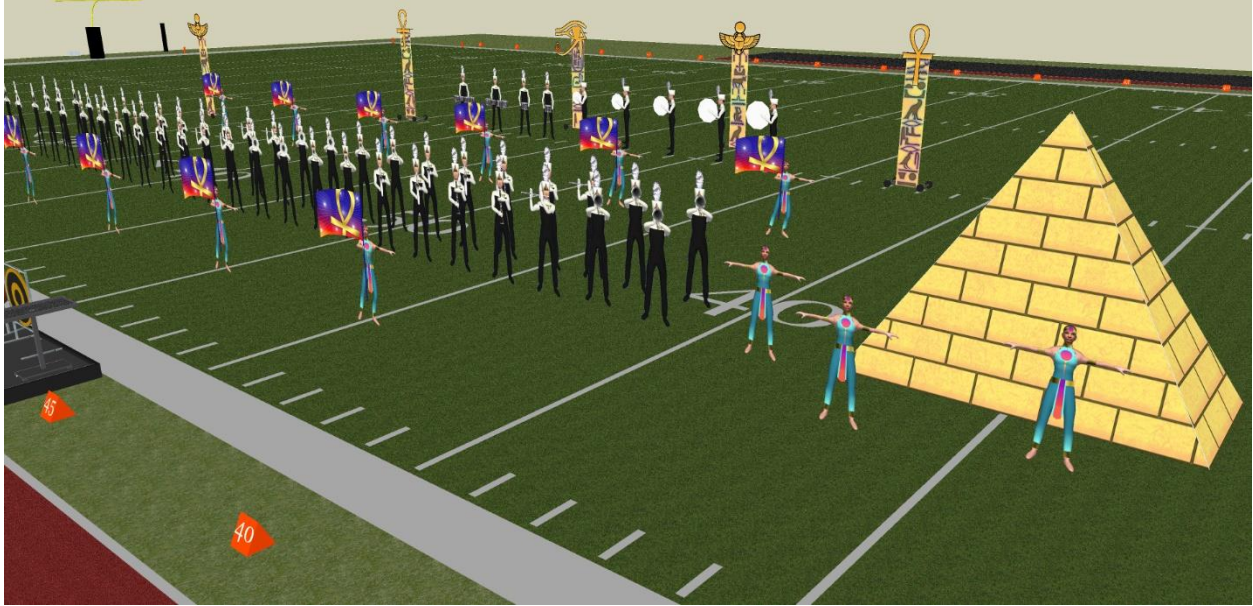
Since the ballad is relatively up tempo, a standard size silk which allows for more complex guard work is called for. The motif of golden hieroglyphs continues, in this case an *ankh*, the ancient Egyptian symbol for eternal life, the driving force of their spiritual lives. Warmer colors contrast with the cool blue of the opener.



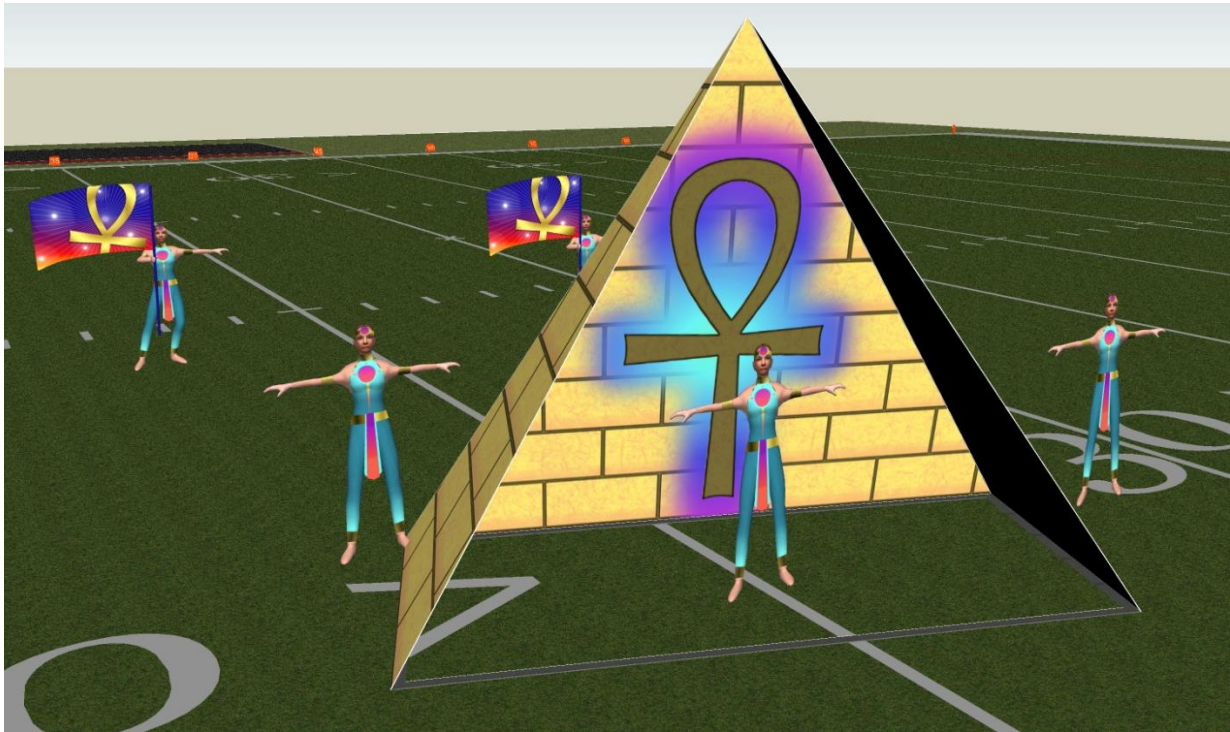


This visual warmth perfectly accompanies the brass choir which opens the movement musically, and the following woodwind focus moment. The drill stages these two musical ideas while moving towards Side B and bringing focus to the pyramid prop...





As the hornline arrives at a unison form focusing at the pyramid, and the music reaches its crescendo, a few featured guard performers turn the prop to reveal the massive ankh within. For a further visual impact, LED lights could be added to the inside of the 'tent' to illuminate the dancer inside and further the effect of mysterious, cosmic Egypt.

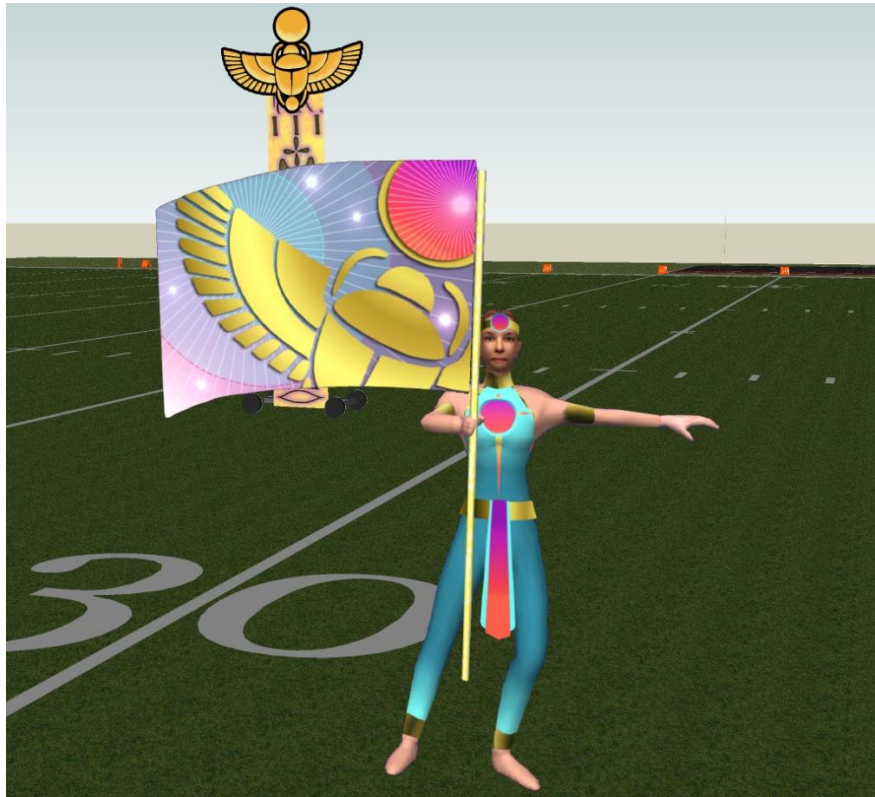




...and the ballad reaches its climax, with the turned prop serving as a stage for a featured dancer and the rest of the guard filling the field with warm, glowing color. The horns and drums have limited drill, but lower body choreography maintains interest without getting in the way of the musical statement.

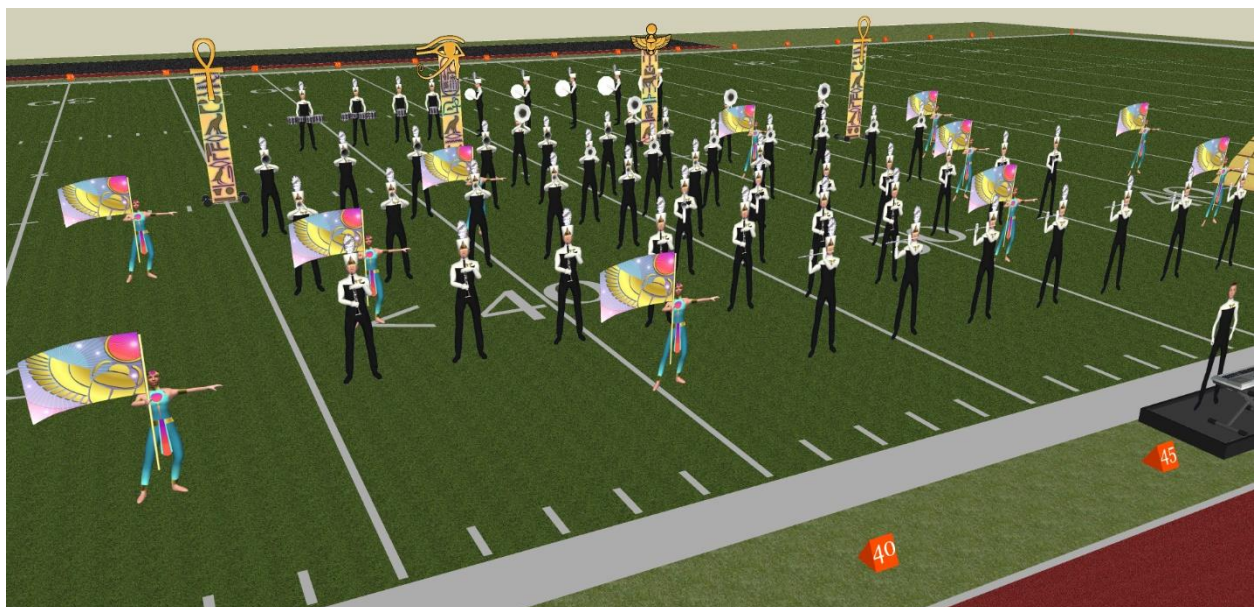
A mysterious transition then prepares the audience for the last round of excitement to come...

Closer Effects



As a driving groove begins in the drumline, the guard introduces the final silk of the program the Winged Scarab whose connection to the sun disk made him divine to the Egyptians. Bright colors prep the eye for the final push.

As the tempo increases, full-ensemble musical development is matched by contrary motion in the drill, building excitement without unduly challenging the performers who can focus on their playing.





A mid-movement maestoso arrival moment calls back to the Opener and sets the ensemble up visually for the final effect.

Simple, pulse driven musical motifs accompany contrary motion drill which 'pushes' the pyramid prop [actually moved from within] to center stage.





... where it is turned to once more reveal the *ankh* within. The drill brings the full hornline front and center for maximum visual and musical impact while the guard on full silk makes a final, majestic visual statement.



Created with Pyware 3D®

