



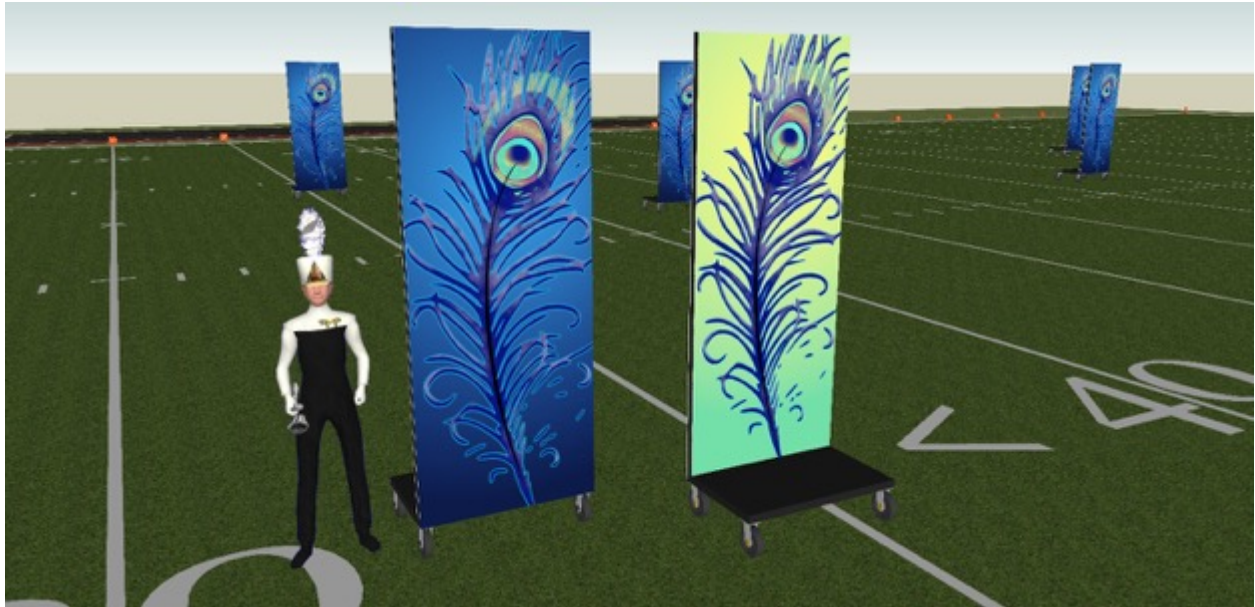
Juno

Fannin Musical Productions

Juno draws its inspiration from one of Aesop's simple, but timeless fables to weave a moving tale of the triumph of inner beauty. The exotic musical score and sound design transport audiences to the forests of India while the elegant beauty of the peacock creates a visual program that fills the field with color and pattern. The result is an inspiring, beautiful show that will impress students, audiences, and judges alike.

Props & Set Design

For *Juno* we have created different prop and staging options to suit the needs of your unique ensemble. Mix and match to create a unique stage for your band's performance.



For a simpler and somewhat less expensive option, simple but effective double-sided backdrops allow for a variety of effects as the show progresses. Our graphics are designed with the [Front Panel Adjustable Media Frame by Corps Design](#) in mind, but can be adapted to your previously existing backdrop frames. High quality, professional digital printing is available from [Total Visual Design](#).

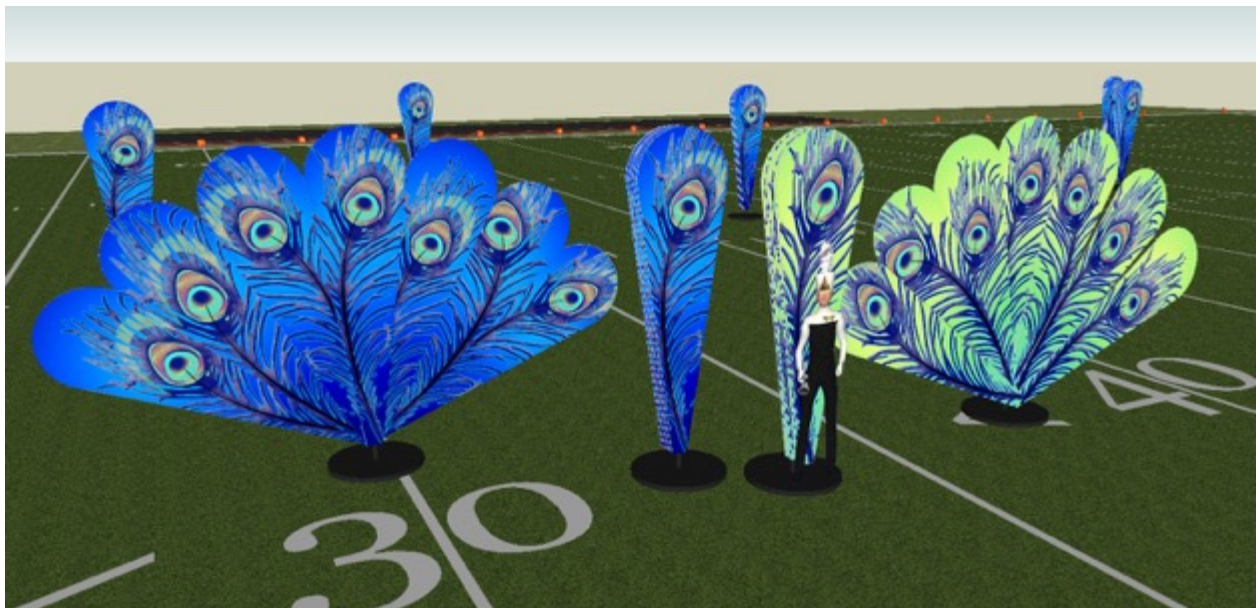
Below, we see how a set of 8 can be used to immediately set the mood as the show opens.





Above, the high-contrast reverse side of the props is turned to illustrate the high impact that this immediate shift of color palette creates. Turn individual ‘feathers’ to draw attention to featured soloists and groups, a ‘spotlight’ for your best performers.

For a more complex effect with even higher impact, we have also designed a truly custom prop for Juno, as illustrated below. Here the feather graphic is placed onto rounded forms reminiscent of the peacock feather most often seen in popular culture. The same ‘spotlight’ effect of turning individual feathers works here, with the additional impact of ‘fanning’ the feathers at the biggest impact moments of the program. Easy to follow construction blueprints for the custom props, as well as high-quality, professional digital printing of the graphics, are available from [Total Visual Design](http://TotalVisualDesign.com).





Above, the custom props in the opening configuration of the show. The unmistakable shape of the peacock feather sets the mood and gives the audience a visual clue to latch onto.

Below, the 'spotlight' effect of turning an individual feather to highlight a soloist.





Above, the 'fan' effect planned for the largest impact point of the ballad movement, certain to get an immediate emotional response.

Below, the fanned peacock tails, turned to their bright side to push the visual impact even higher for the exciting conclusion of the program.



Flag & Costume Design



BAND SHOPPE® GUARD UNIFORM DESIGN FOR

JFP Peacock

421915_452022_432028_A



COLORS USED

- PEACOCK PLUSH VELVET - UNITARD, SCARF, SKIRT BINDING
- TEAL MYSTIC JEWELS - UNITARD BODICE
- PRINTED PCS - 480491437

WFS_LLL

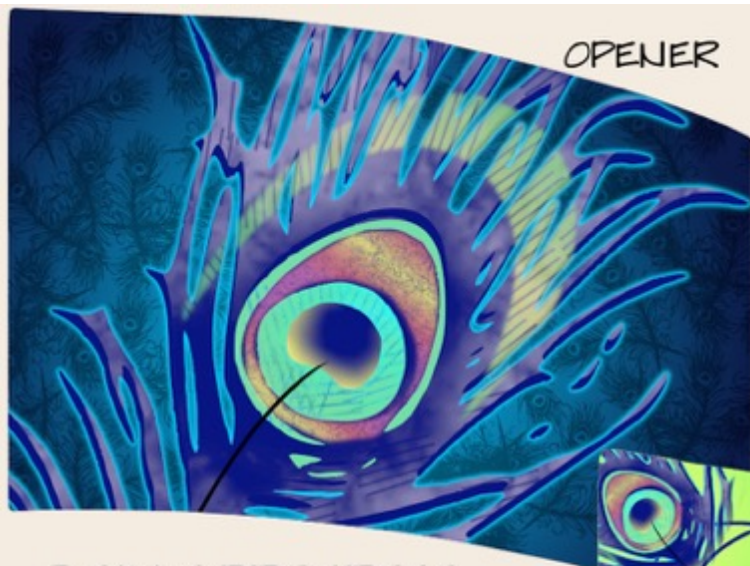
I APPROVE OF THIS COLOR GUARD UNIFORM DESIGN ☐ as shown ☐ with changes

PLEASE SIGN HERE

SIGNATURE: _____



www.bandshoppe.com :: 1.800.457.3501 :: © COPYRIGHT 2012, BAND SHOPPE, DIV. PEARISON, INC. :: 10.08.2020



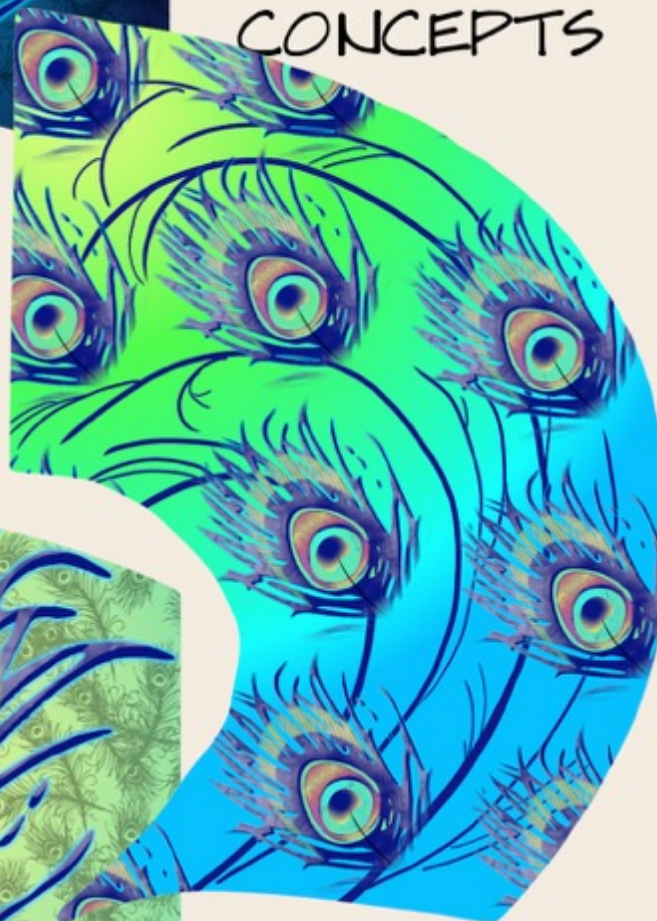
OPENER



Jun

FLAG
CONCEPTS

3 SILKS PROGRESS
THROUGH COLOR
SPECTRUM WITH
THE SHOW,
MIRRORING THE
CHANGE IN PROPS
& COSTUMING

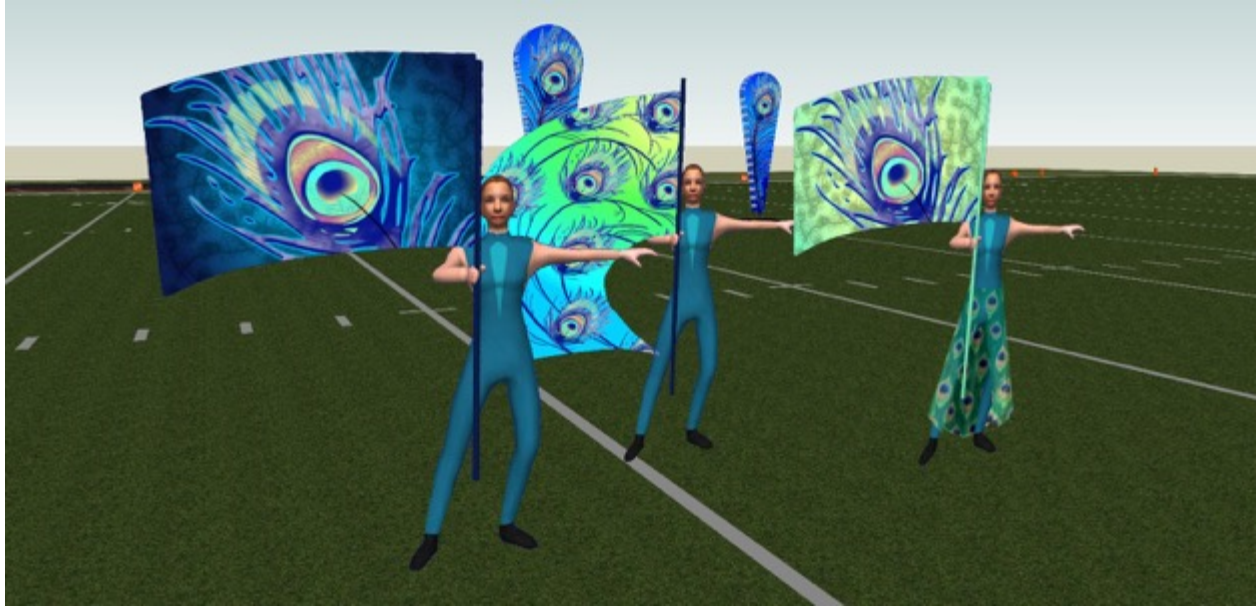


CLOSER

BALLAD OVERSIZED
SWING FLAG

FMP
FANNIN MUSICAL
PRODUCTIONS

POWERED BY
BAND SHOPPE



The color guard design for *Juno* is simple, but expertly coordinated with the musical and set design elements to tell the tale. The colors of the silks become ever brighter as the show progresses, mirroring the increased visual punch of the evolving props. In the final movement, a separate skirt mimics the peacock's tail, filling the field with that much more color and pattern.

Opener Scenes & Effects



The first movement of Juno introduces a featured soloist—originally written as soprano saxophone and here illustrated as a clarinet—which serves as the voice of the peacock character throughout the story. Staged near one of the custom props which is turned to ‘spotlight’ them visually, the visual and musical coordination is sure to generate effect. Let FMP’s team of arrangers customize the program to feature your most gifted students on any instrumentation.

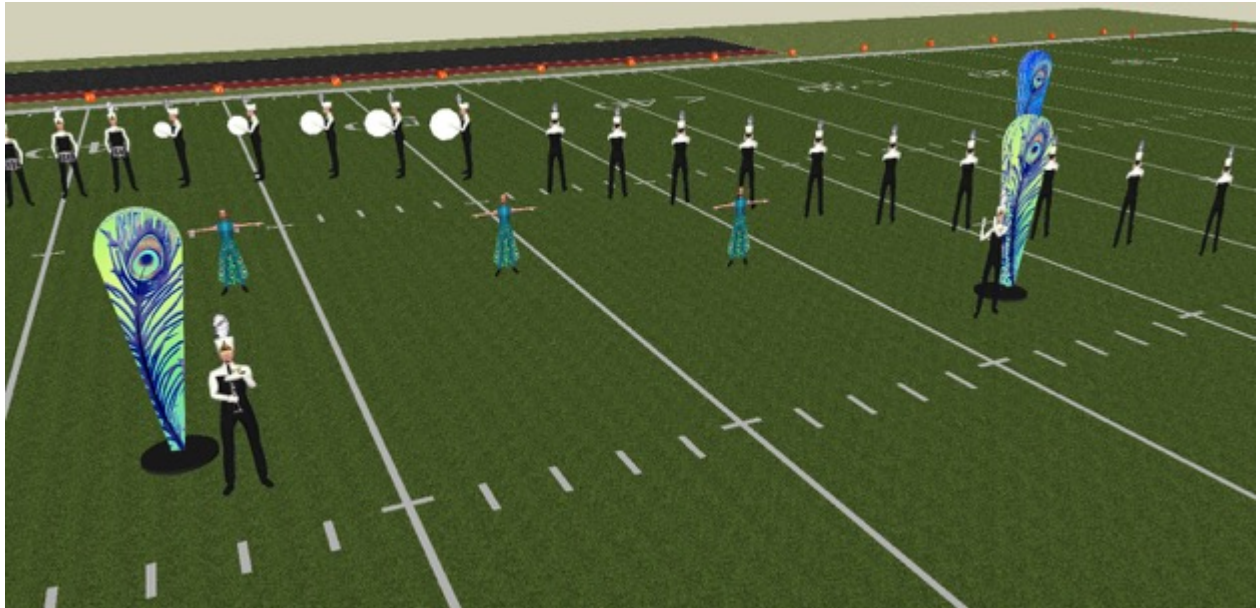
Meanwhile, the opener silk is introduced, our first glimpse of the beautiful peacock tail to come.





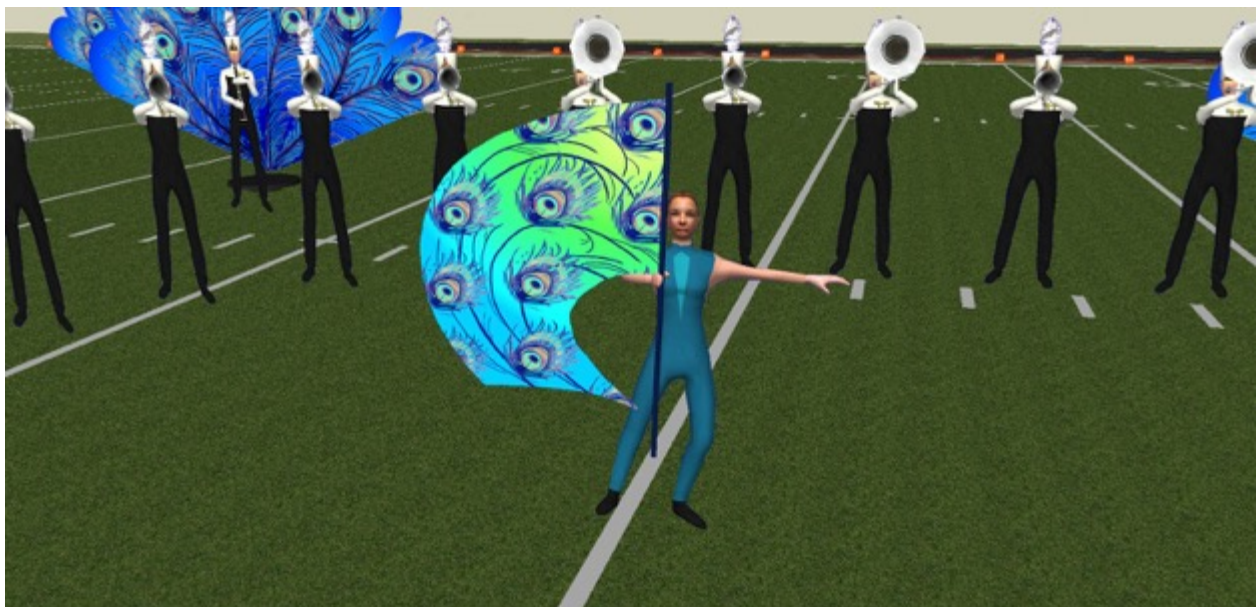
Which, of course, builds to our first coordinated impact, with the eyes of the peacock tail filling the field.

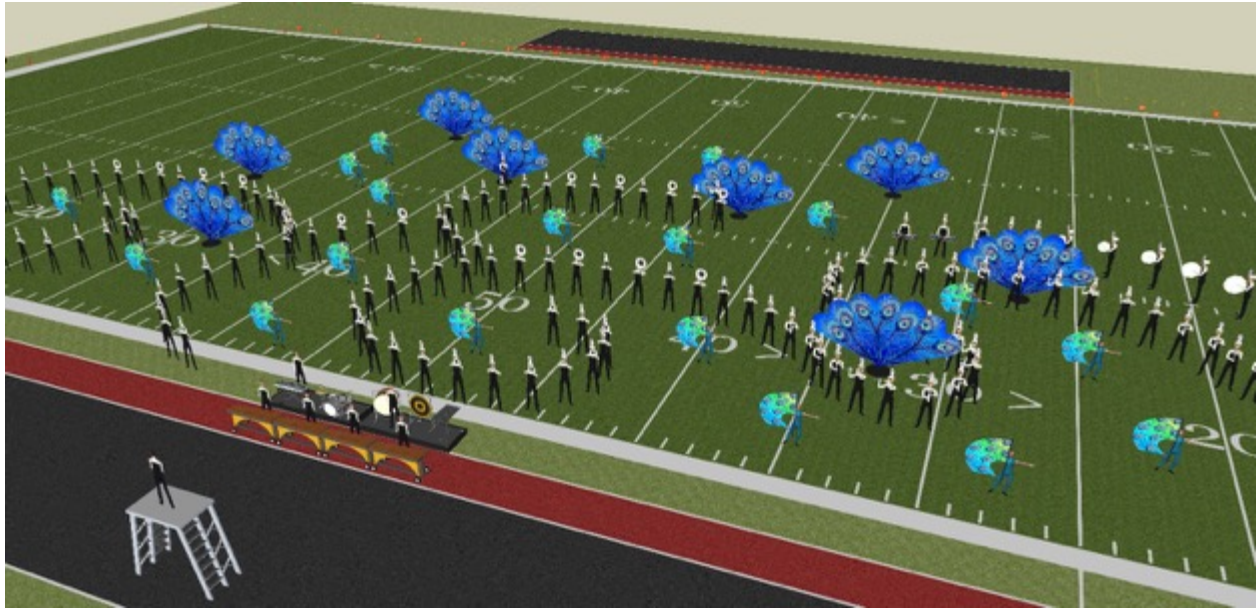
Ballad Scenes & Effects



In the ballad movement, the ‘spotlight’ effect is again utilized, this time for a duet—illustrated here as clarinet and flute but fully customizable for your group’s strengths—which musically dramatizes the dialogue between the goddess Juno and the mournful peacock.

For this movement, an oversized swing flag is utilized in which the transition between color palettes is made manifest.





...all of which leads to the emotional heart of the story: the peacock realizes their beauty and the custom props snap open in dramatic fans. Combined with the oversized silks and a powerful score, this is certain to be the major applause point of your band's season.

Then, as the rest of the ensemble begins to restage for the final movement, a new soloist takes the turn by the peacock-fan 'spotlight.' Originally written for tuba, allow our arrangers to feature another of your most gifted students.



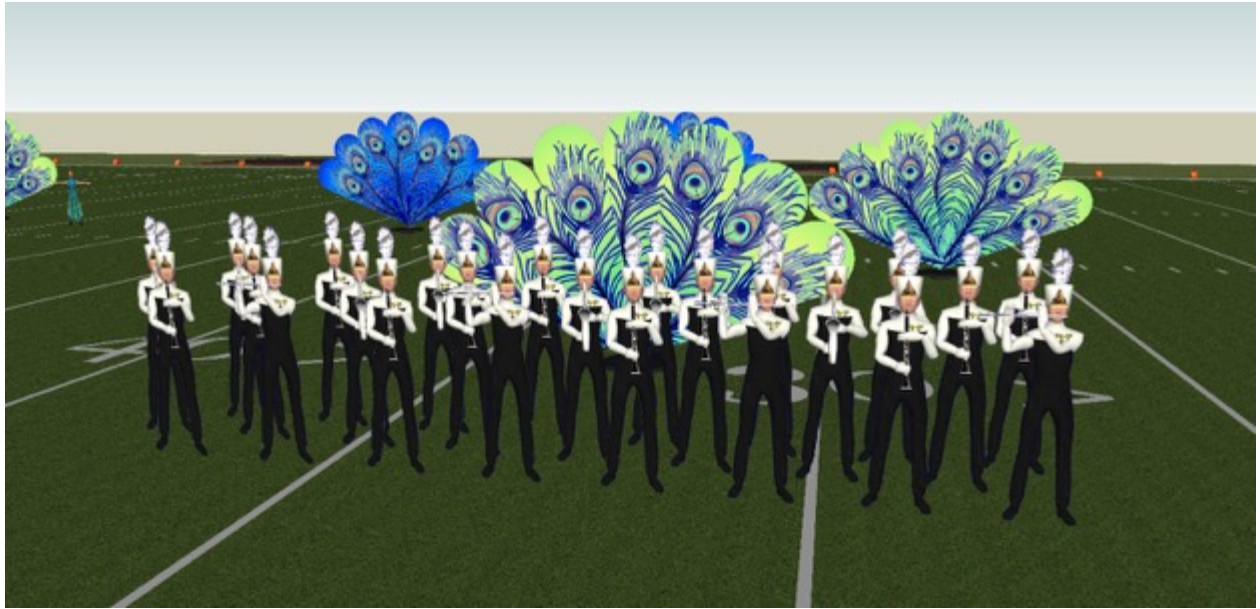
Closer Scenes & Effects



The final movement of *Juno* begins by allowing several different sections to take their turn centerstage, and our custom props allow you to put the audience's eye directly on them each in turn. First, the drumline has their glory moment, staged near one of the fans which is turned to draw the eye.

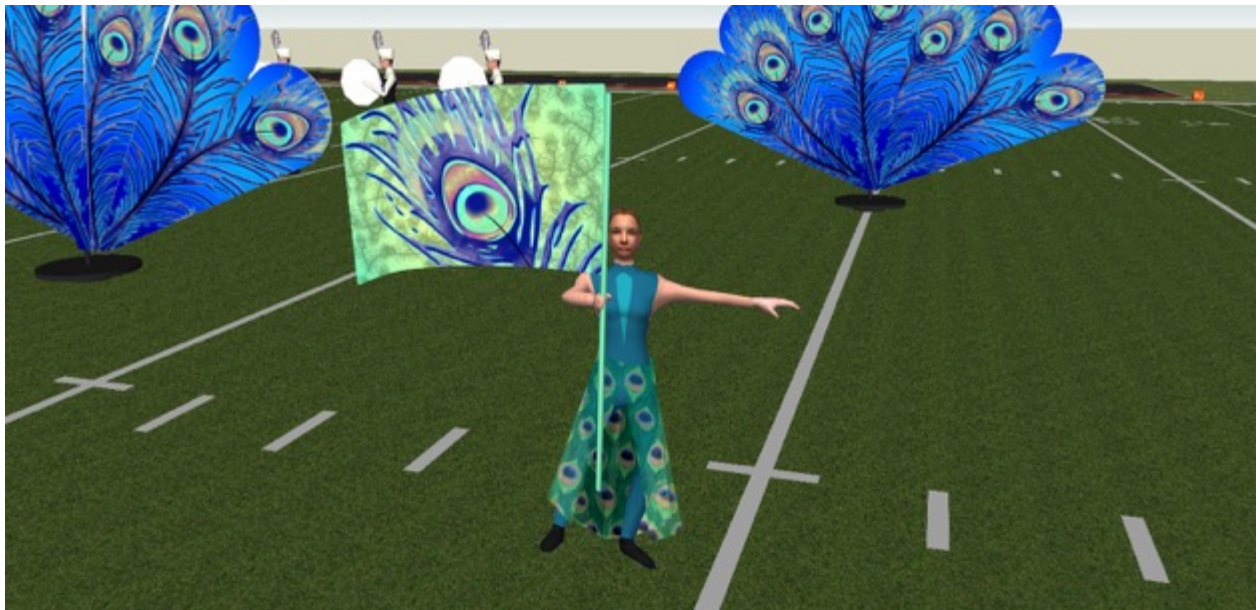
Then, the brass section has their turn.





...and finally, the woodwinds.

By now, the field is being filled with new, brighter color to reflect the peacock's newfound joy as they understand the gift that the goddess Juno has bestowed. The guard filters in with the new, bright flag silks and the peacock-tail skirts attached, creating an ever more over-the-top visual excitement.





The show ends with the field and the emotional landscape of the show completely transformed. Where once the peacock's cry sounded mournful, it is now joyous, a mythic interpretation of the power of realizing your own inner beauty.

Created with Pyware 3D®

