



Junk Yard

Fannin Musical Productions

Junk Yard is a fun, original show with an immediately accessible concept for crowds and judges to latch onto—while at the same time offering limitless effect possibilities. The show progresses through three materials that might be found in a junk yard: wood in the first movement, rubber in the ballad, and metal with a rock groove and unique melodic and harmonic vocabulary in the closer. This strikingly simple concept provides a surprising richness of timbres which will make your ensemble stand out at any competition.

Set Design & Props

For *Junk Yard* we have created several different prop and staging options which you can adjust to suit the needs of your unique ensemble.



For instance, with smaller bands which might not use a drumline, placing the pit in the back along with our props creates a smaller stage and gives the unit more presence on the field.





Whereas larger bands using a more traditional pit placement can move the same elements further out to encompass more of the field and give themselves room for drill and visual performance.

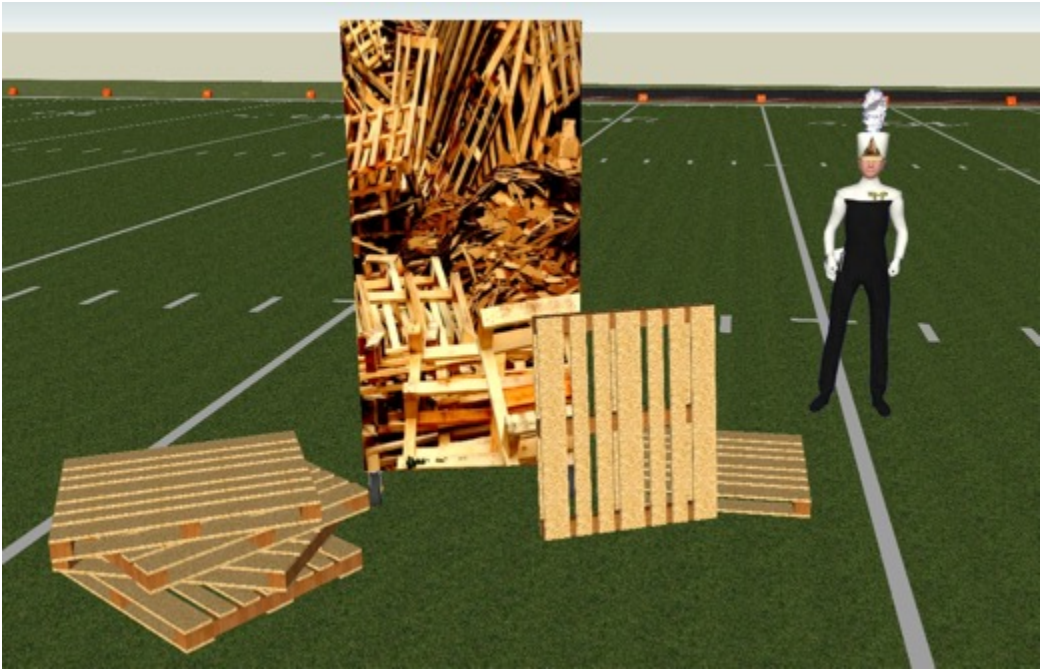


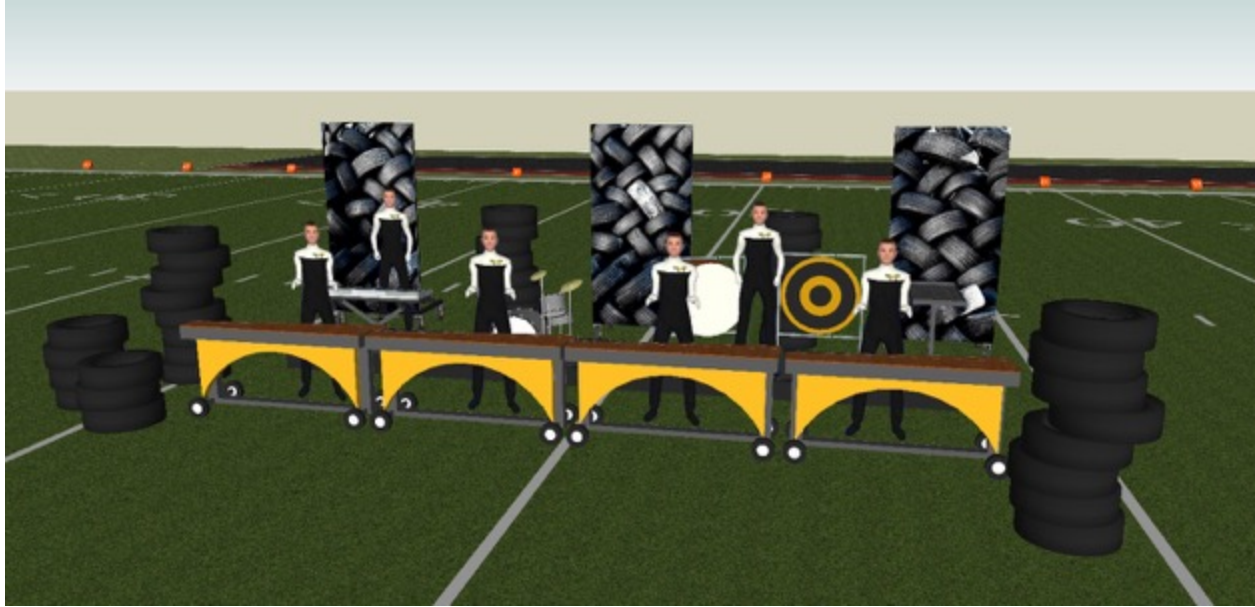


Front screens are a simple way to frame the stage, and also clean up the area used for color guard transitions. In addition, they provide a place to demonstrate show imagery right away to your audience and establish theme. For *Junk Yard*, we have designed front screens featuring a wall of junked cars, immediately establishing the show's setting. This imagery & color palette is carried over into the guard design—silks and costuming—for a unified visual language across the concept.

Our front screens are designed to utilize 8 of the [Corps Design 4 x 8 Sideline Screens](#), with high-quality digital printing available via FMP. Or, allow our artists to customize the sizing to suit screens you already have.

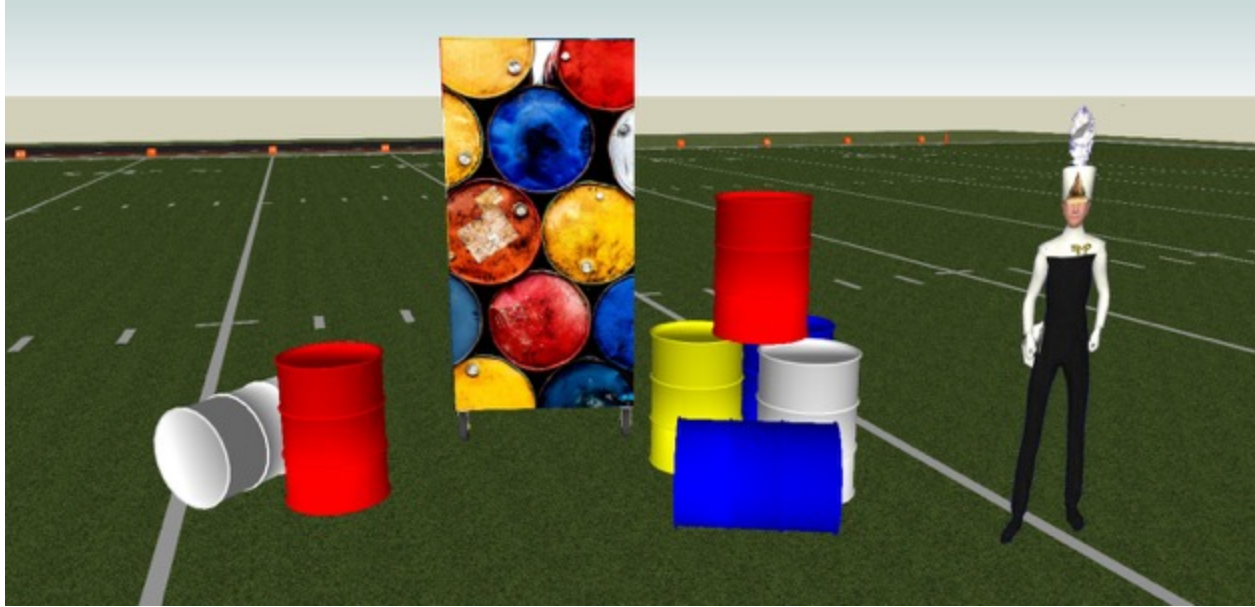
On the field proper, a series of three backdrops, accompanied by less traditional, but easily sourced props establish the theme of each movement. First, on Side A, wood, featuring scrap wood palettes.





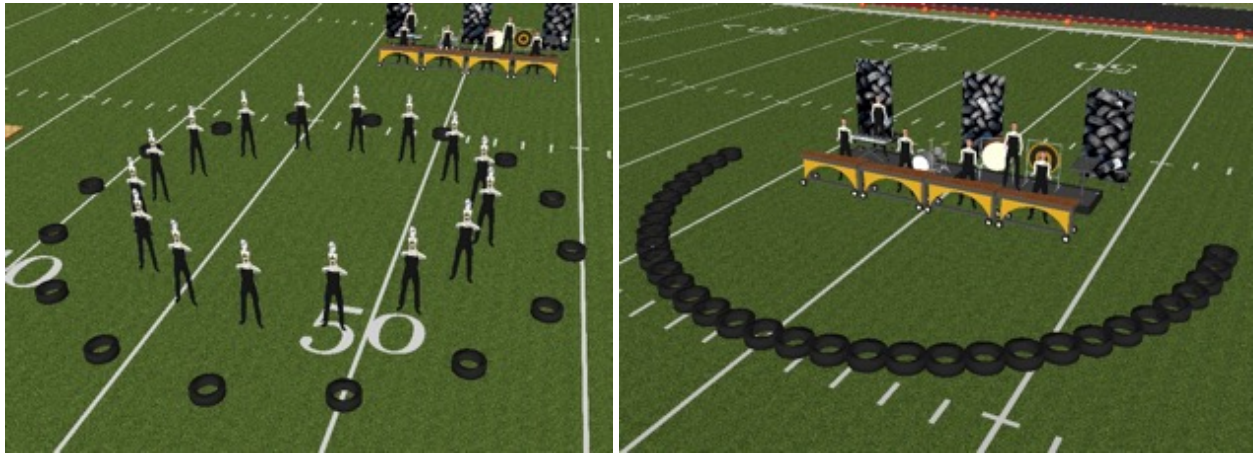
...then, centered backfield, rubber, utilizing scrap tires. Shown above is a possible configuration with a backfield pit, while below we see one for a more traditional pit placement. The tires, easy enough to come by, are a highly adaptable prop which will take center stage in our second movement in a variety of ways.





...then, finally, on Side B we have metal, accompanied with equally easy to source scrap 55-gallon drums. Our backdrops are designed to utilize 5 of the [Corps Design Adjustable Media Frames](#), with high-quality digital printing available via FMP. Or, allow our artists to customize the sizing to suit frames you already have.

The palettes, tires, and 55-gallon drums are cheap, easy to find, very nontraditional props which become one of the most interesting aspects of *Junk Yard*, a surefire way to make sure that judges remember your group when writing down their number on a long day of bands. Particularly because they can be used in so many different ways, as illustrated with the tires below.



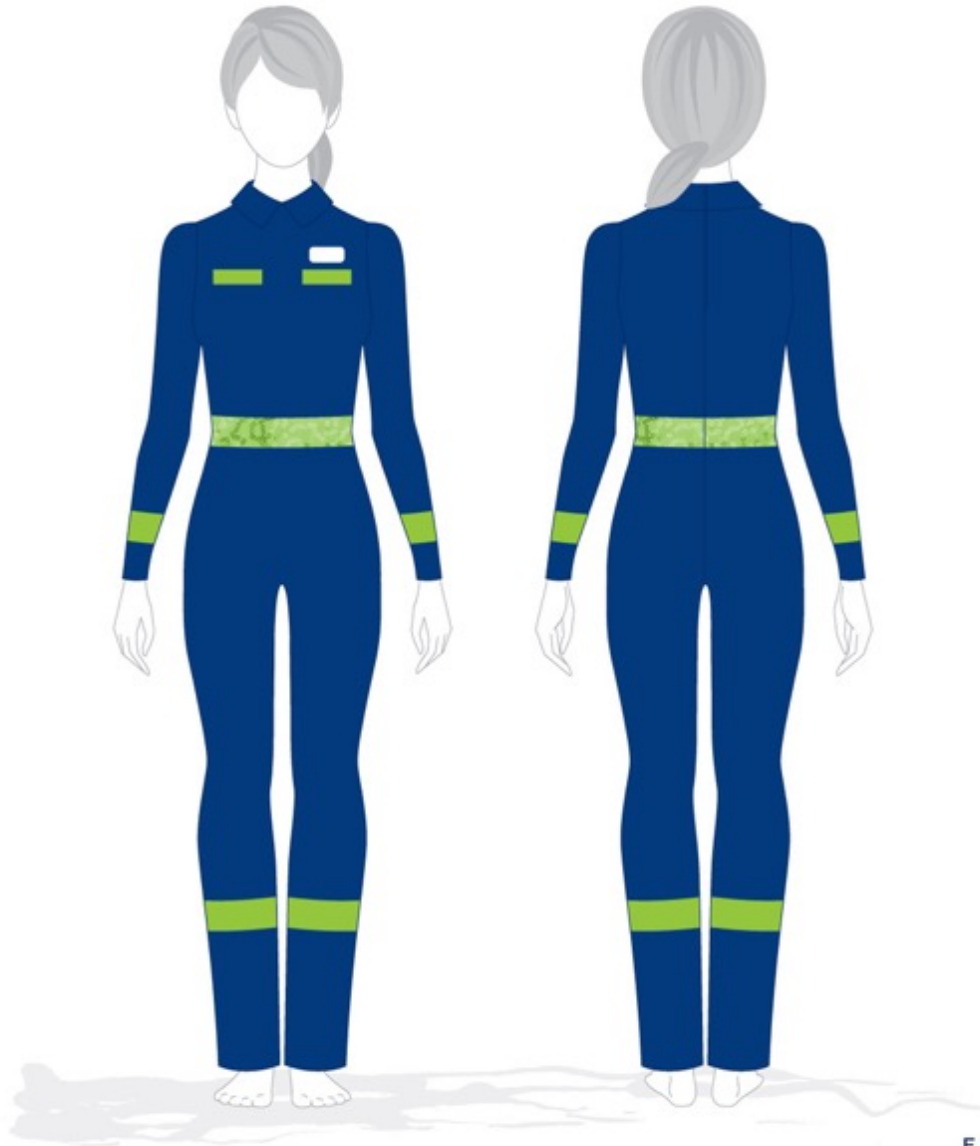
Flag & Costume Design



BAND SHOPPE® GUARD UNIFORM DESIGN FOR

JFM - Junkyard

CustomGU_A



EJF_LLL

COLORS USED

- NAVY MICRO SEQUIN
- ROYAL PLUSH VELVET
- NEON LIME MATTE SPANDEX
- LIMES GREEN MICRO SEQUIN
- WHITE MATTE SPANDEX

I APPROVE OF THIS COLOR GUARD UNIFORM DESIGN: as shown with changes

PLEASE SIGN HERE

SIGNATURE: _____



When you sign and return your "Sketch for Approval", you are stating that spelling, art, colors, size, and dimensions have been checked for accuracy. Actual colors, fabrics, and designs may vary slightly from the sketch pictured above. Every effort will be made to provide the closest match possible.

www.bandshoppe.com :: 1.800.457.3501 :: © COPYRIGHT 2021, BAND SHOPPE, DIV. PEARISON, INC. :: 11.15.2021

OPENER



3 SILKS PROGRESS FROM WOOD, TO RUBBER, TO METAL, REFLECTING 3 SHOW MOVEMENTS & THE SET DESIGN.



CLOSER

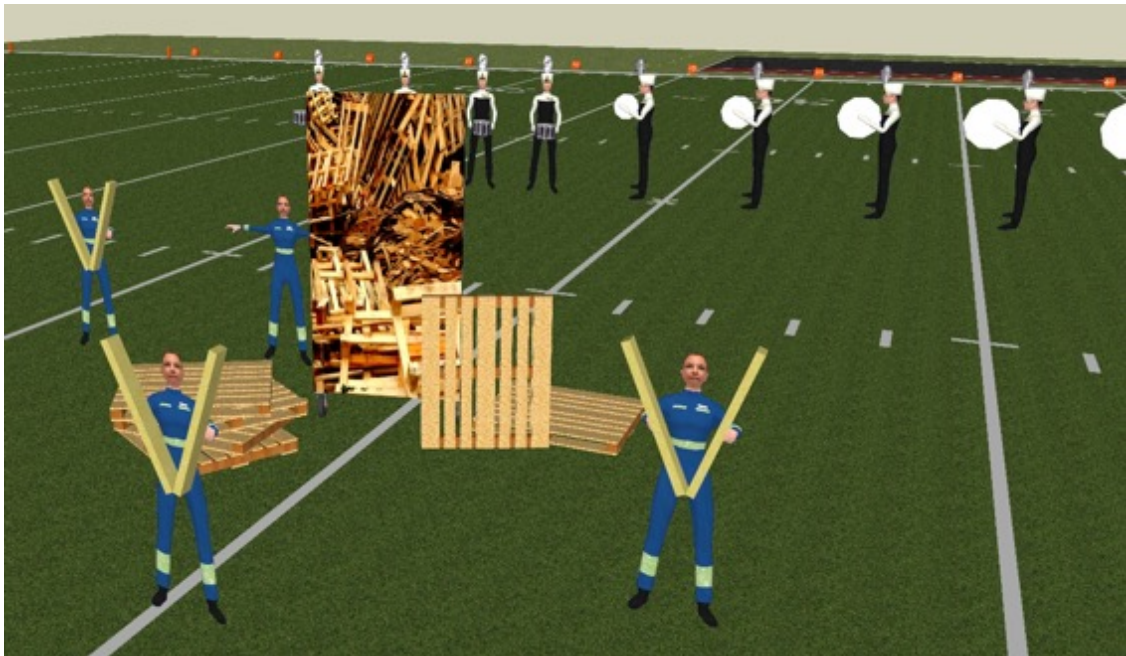
BALLAD OVERSIZED SWING FLAG





The color guard design for *Junk Yard* is designed to fit perfectly into the environment which the staging has created for these characters. The costumes are a sly wink at workers coveralls, utilizing the 'safety yellow' of practical work clothes as an eye-catching 'pop color' on the field. Meanwhile, the flag silks use much of the same imagery as the backdrops and front screens to give the entire production a through-designed, cohesive, thoroughly modern feel.

Movement 1 Effects: Wood



As Movement 1 begins, we immediately see how the materials associated with each musical production provide unique timbres and musical opportunities. The color guard—or other performers—begin the show by playing on oversized, visually interesting slapsticks which were hidden among the palette props. Soon a percussive dialogue between the slapsticks and the drumline proper begins to drive the energy of the entire ensemble.

...and the wood theme is reinforced by the first silk, quickly introduced by the remaining guard performers.



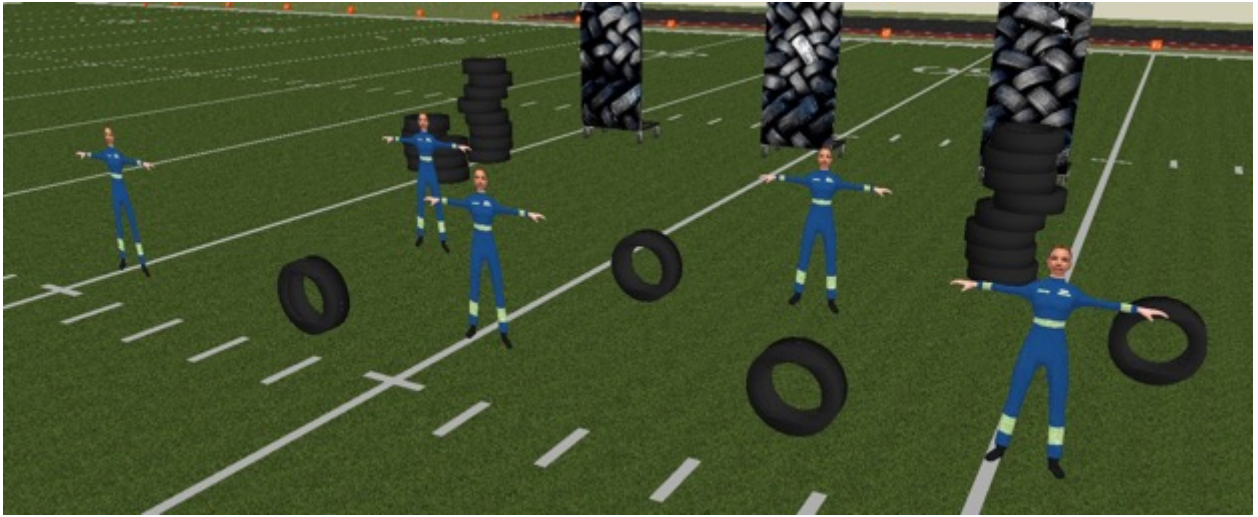


The first melodic idea becomes a feature opportunity—first in the trumpets and then in the woodwinds with mellophone reinforcement. This dialogue between sections is mirrored in the guard design with two groups utilized: slapsticks and standard silks.

As the movement reaches its climax some of the guard return to the slapsticks for a unique and visually arresting final guard moment featuring both standard and nontraditional equipment.

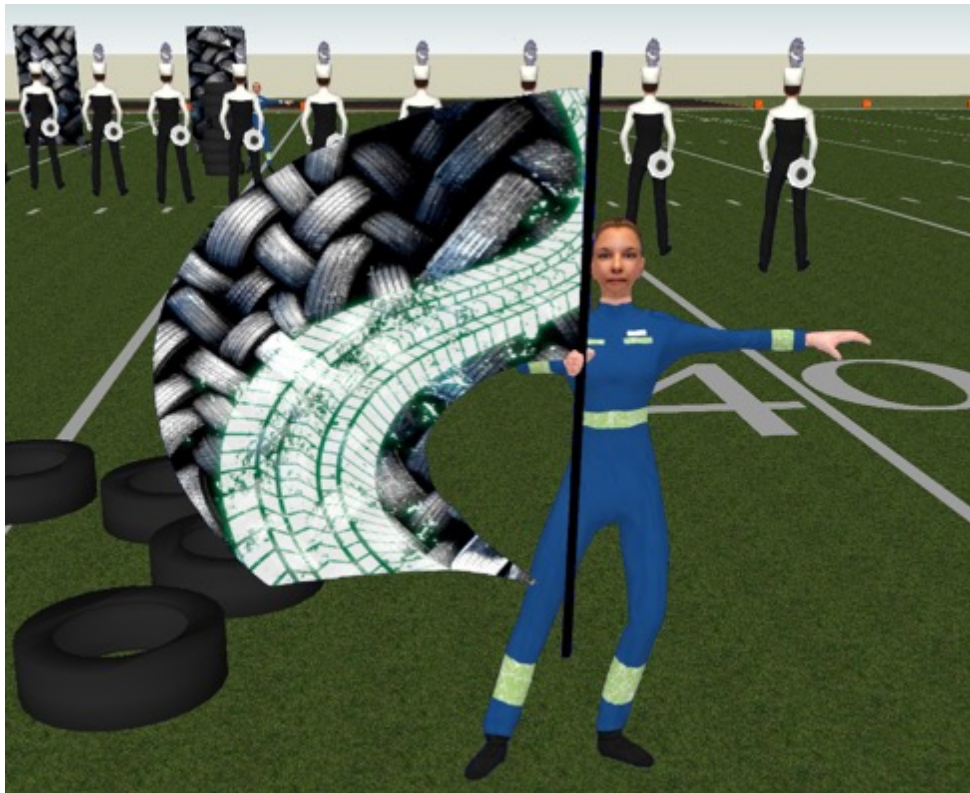


Movement 2: Rubber



Visually, Movement 2 explores the possibilities of an even more unusual piece of equipment: the scrap tires. Easily moved by single performers, they can be incorporated into the choreography in many ways, such as rolling illustrated above.

Of course, no ballad would be complete without the use of a beautiful, flowing swing flag—also featuring the tires.





Another unique and eye-catching use for the tires-as-props is to frame the duet which is the musical highlight of this movement. Originally composed for trumpet and flute—as shown here—allow our arrangers to rescore these parts to feature your most talented students, whatever their instrument.

All of these elements come together to create the major arrival point of the ballad, lush music with beautiful curvilinear drill ornamented by curved forms in the tires and the flowing swing flags.

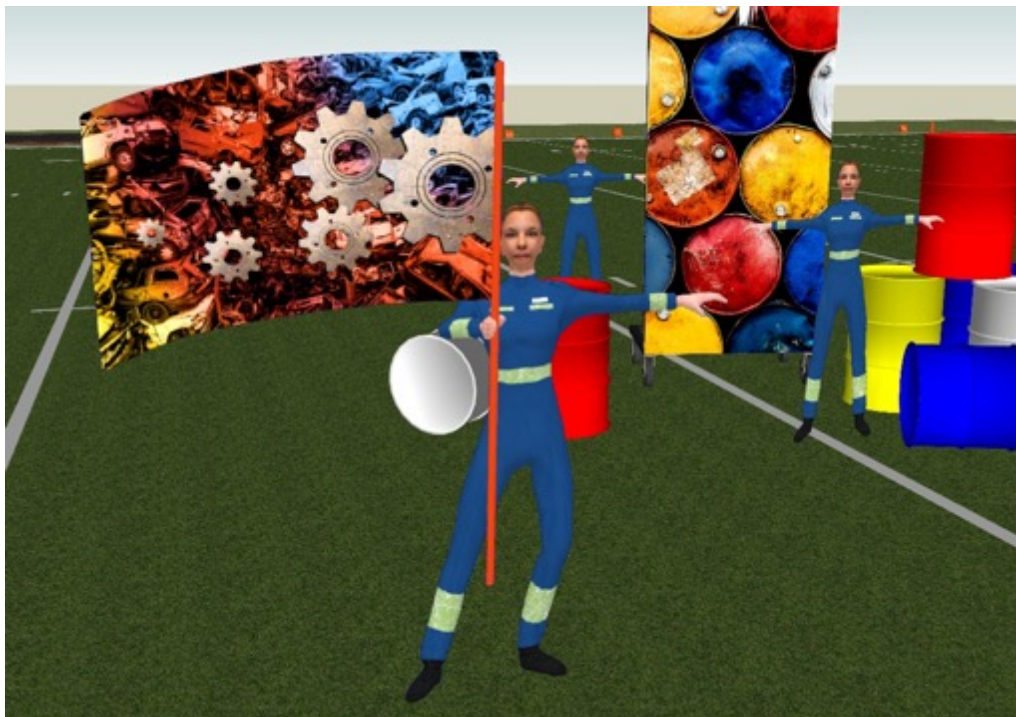


Movement 3: Metal



Finally, the closer brings us to metal, and all the raucous, percussive energy that implies. Colorful 55-gallon drums are rolled out from the final staging area to become makeshift drums in a rhythmic dialogue with the drumline proper. Performed on by the color guard or other performers, these old pieces of scrap become powerful generators of visual and musical effect!

Meanwhile, the remaining color guard introduces our last flag silk, a call back to the front screens and a splash of color helping to drive the energy forward.





Driving, metallic percussion combines with bright colors, unique staging, and a unique melodic and harmonic vocabulary to bring the closer, and the entire show, to a brilliant, impactful finish which is sure to bring your audience to its feet with excitement. *Junk Yard* is a show your students, audience and judges are certain to talk about for years to come.

Fin.

Created with Pyware 3D®

